

## Product Change Notice

PCN Tracking Number: P1304016-R8C\_M16C General Purpose--wire material, lead plating & lead frame change  
(Japan PCN #N/A)

**Customer:** All Customers

**Renesas Product Type:** R8C/M16C LQFP-32, 48, 52, 64, 80, 100pin material change – General Purpose MCU’s only

**Change Description:**

1. Wiring material change (Au→Cu)
2. Lead Plating material change (SnCu→Sn)
3. Lead frame (inner-see appendix B)
4. Packing form (5 trays/pack→8trays/pack (see attached document, see appendix C)

Please refer to the table in Appendix A for the summary of changes by Product Group.

**Reason for Change:** In order to improve productivity and maintain stable supply.

**Schedule of Change:** New parts (part numbers with -#3x and -#5x suffixes) are already in mass production. While many of the current part number are in our End of Life Process (EOL), most are not. However, customers should consider this PCN the 12 Month Notification for the start of the EOL process for those part numbers not already in this process. Therefore, we are asking that customer’s transition to the new part numbers as soon as possible.

**Data Attached:**

1. Reliability report: msr\_12\_1108\_e.pdf
2. QC Process Flow: msq\_12\_0211.pdf
3. List of devices and the replacement part numbers, see appendix D

**Need Response by:** “Written approval or written receipt and status of PCN must be received by Renesas Electronics within 30 days of the issue date of this PCN. Otherwise Renesas Electronics will consider this change approved”.

In case of any questions, please contact your Renesas Electronics sales representative.

Initiator	Title	Issue Date	Contact Information
H. Lyle Supp	Product Lifecycle Specialist Marketing Operations	May 15, 2013	PCN@dm.Renesas.com

RESPONSE:

<input type="checkbox"/> ACCEPTABLE  <input type="checkbox"/> UNACCEPTABLE  <input type="checkbox"/> NOT APPLICABLE	BY: _____ DATE: _____ TITLE: _____  Reason (if unacceptable) _____ _____
---	--

## Appendix A. Summary of changes by Product Group

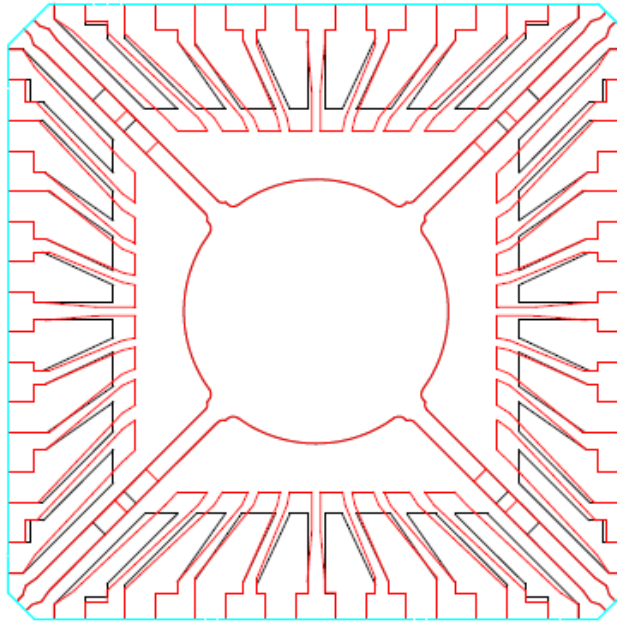
Package	Product Group	Wiring Material		Lead Plating		Lead Frame		Packing Form			
		Current	New	Current	New	Current	New	Current	New		
32LQFP	R8C/33C	Au	Cu	SnCu	Sn	Pattern-A	Pattern-B	5trays	8trays		
0.65mm pitch	R8C/33D			Sn (no change)				No Change		8trays (no change)	
PLQP0032GB-A	R8C/33T					5trays				8trays	
	R8C/33M					8trays (no change)					
	R8C/LA3A										
	R8C/M13B										
48LQFP	R8C/34C	Au	Cu	SnCu	Sn	No Change		5trays	8trays		
0.5mm pitch	R8C/34M										
PLQP0048KB-A											
52LQFP	R8C/35C	Au	Cu	SnCu	Sn	No Change		8trays (no change)			
0.65mm pitch	R8C/35D			Sn (no change)							
PLQP0052JA-A	R8C/35M			SnCu						Sn	
	R8C/L35C			Sn (no change)							
	R8C/L35M										
	R8C/LA5A										
64LQFP	R8C/36C	Au	Cu	Sn (no change)		No Change		8trays (no change)			
0.5mm pitch	R8C/36M			SnCu						Sn	
PLQP0064KB-A	R8C/36T-A			Sn (no change)							
	R8C/L36C										
	R8C/L36M										
	R8C/LA6A										
64LQFP	R8C/36C	Au	Cu	Sn (no change)		No Change		8trays (no change)			
0.8mm pitch	R8C/36M			SnCu						Sn	
PLQP0064GA-A	R8C/36T-A			Sn (no change)							
	R8C/L36C										
	R8C/L36M										
	R8C/LA6A										
80LQFP	R8C/38C	Au	Cu	Sn (no change)		No Change		8trays (no change)			
0.5mm pitch	R8C/38M			SnCu						Sn	
PLQP0080KB-A	R8C/38T-A			Sn (no change)							
	R8C/L38C										
	R8C/L38M										
	R8C/LA8A										
	M16C/63	SnCu		Sn		5trays	8trays				
100LQFP	M16C/63,64,64A	Au	Cu	SnCu	Sn	No Change		5trays	8trays		
0.5mm pitch	M16C/65,6C			Sn (no change)							
PLQP0100KB-A	M16C/64C,65C										
	R8C/L3AC										
	R8C/L3AM										

**32LQFP Lead Frame superposition figure**

2012/9/10

Black: Before change

Red: After change



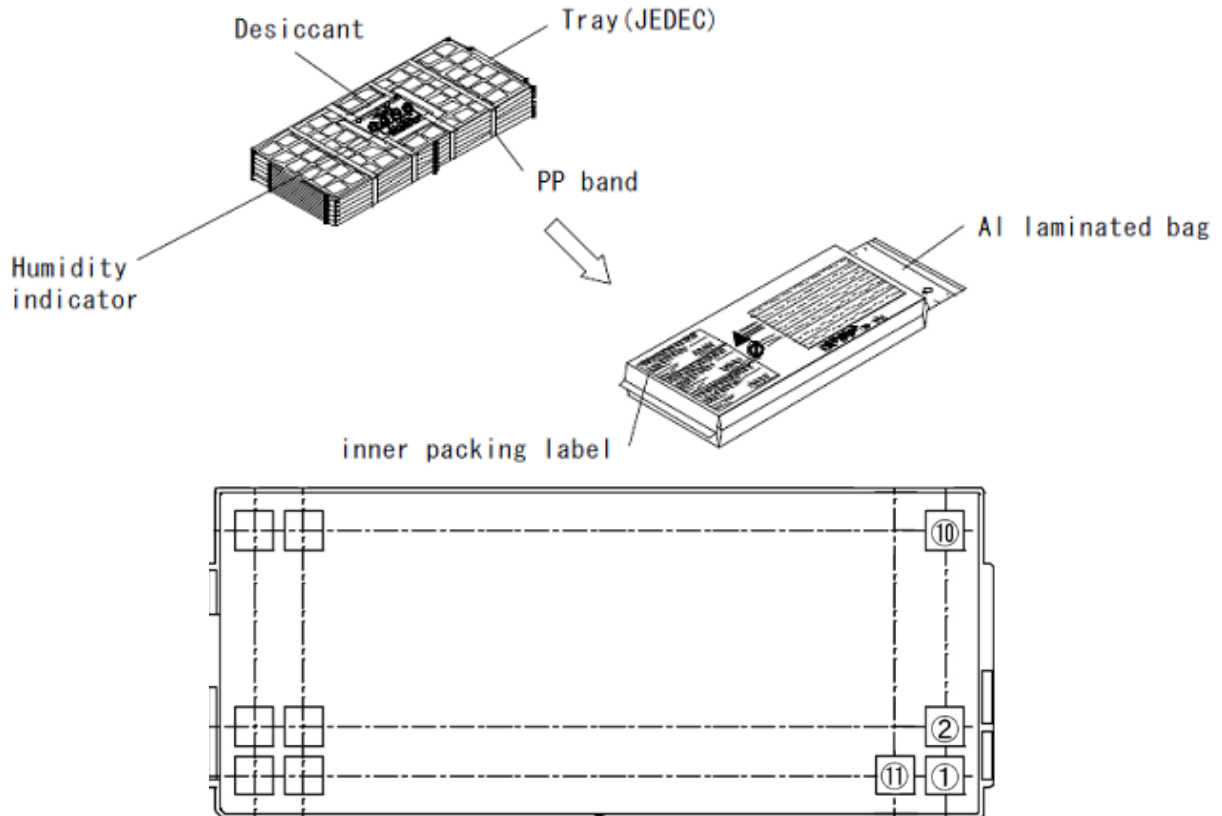
Black: Pattern A—Current bonding pattern (before change)

Red: Pattern B—New bonding pattern (after change)

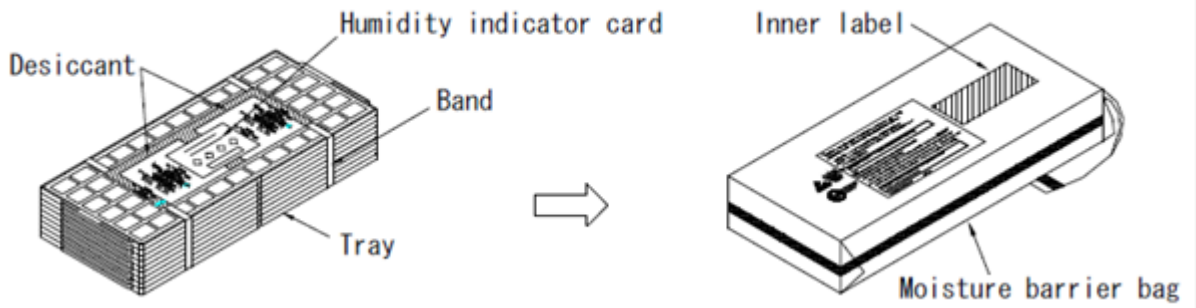
**Appendix C. Packing Form Changes**

**1) Packing Form change(integration) of PLOP0032GB-A, PLOP0048KB-A**

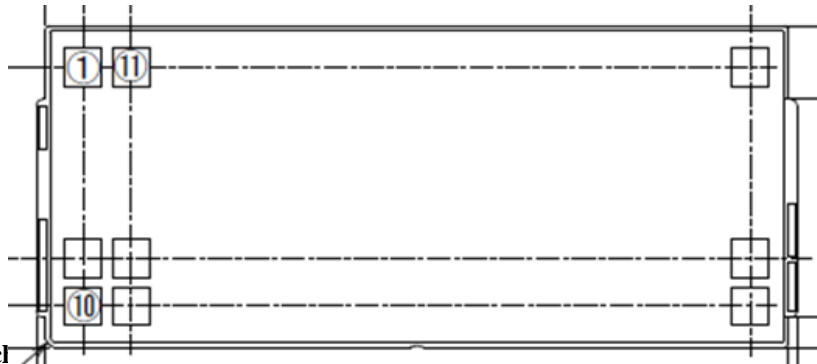
**1a) Actual:5 trays : 5 trays (Package) + 1 tray (Lid)**



**1b) Change(integrate) to 8 trays: 8 trays (Package) + 1 tray (Lid)**

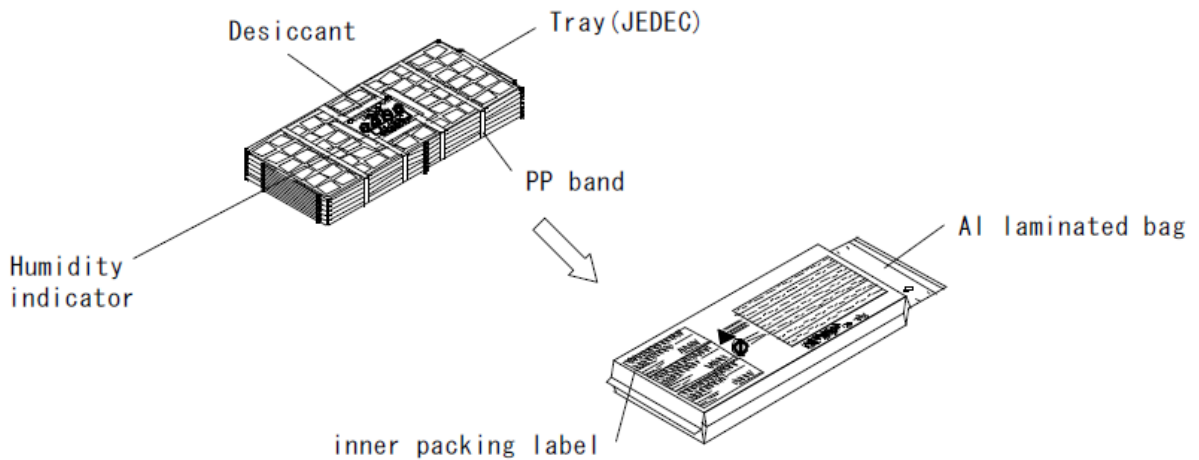


The

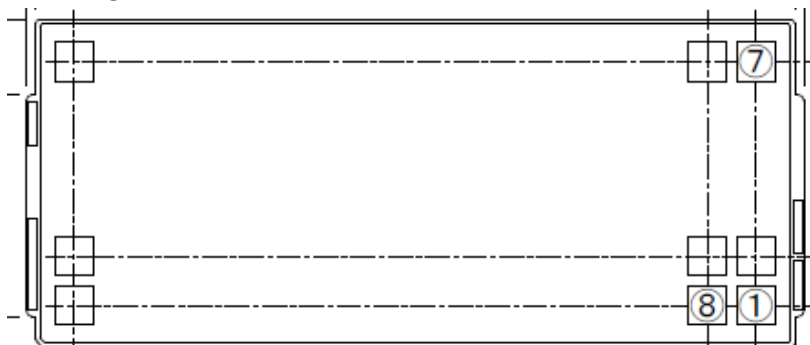


2) Packing Form cl

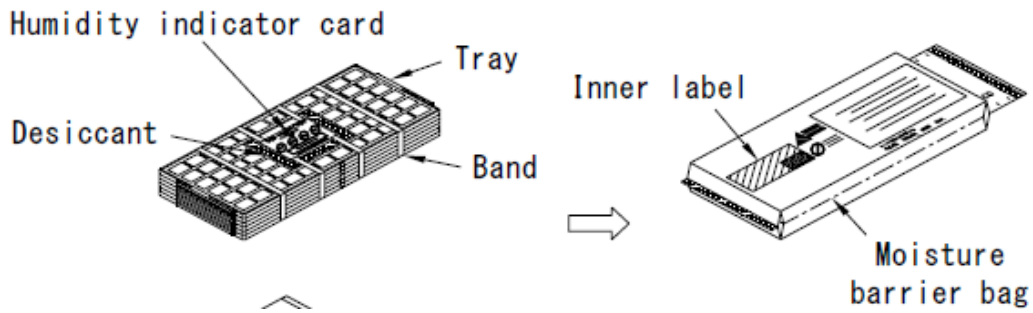
**2a) Actual:5 trays : 5 trays (Package) + 1 tray (Lid)**



The device mounting order.



**2b) Change(integrate) to 8 trays: 8 trays (Package) + 1 tray (Lid)**

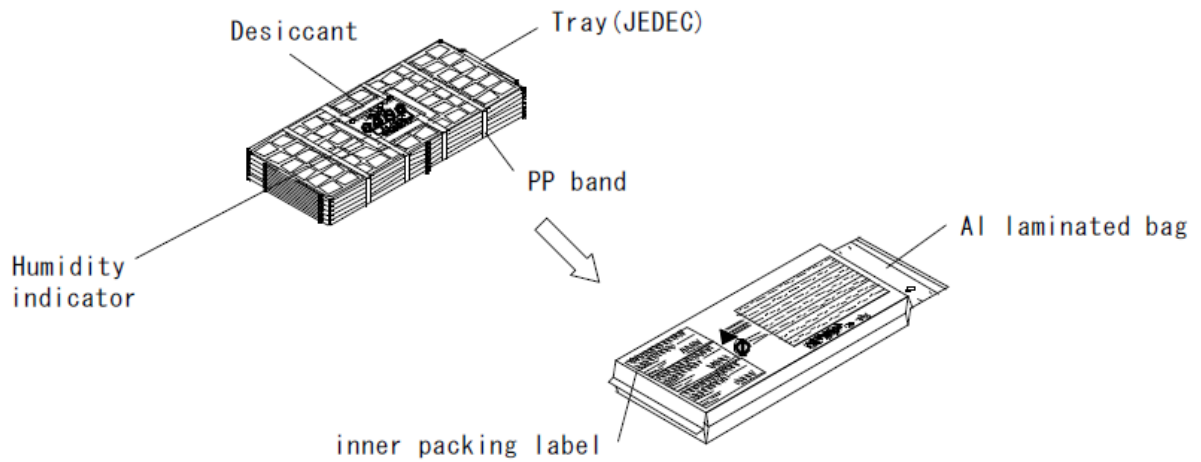


The device mounting order.

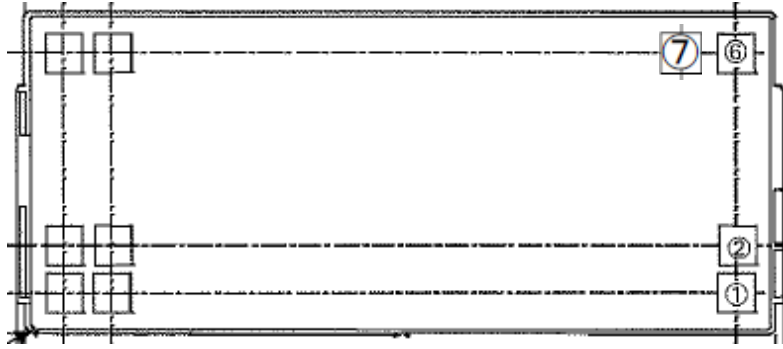


**3) Packing Form change(integration) of PLQP0100KB-A**

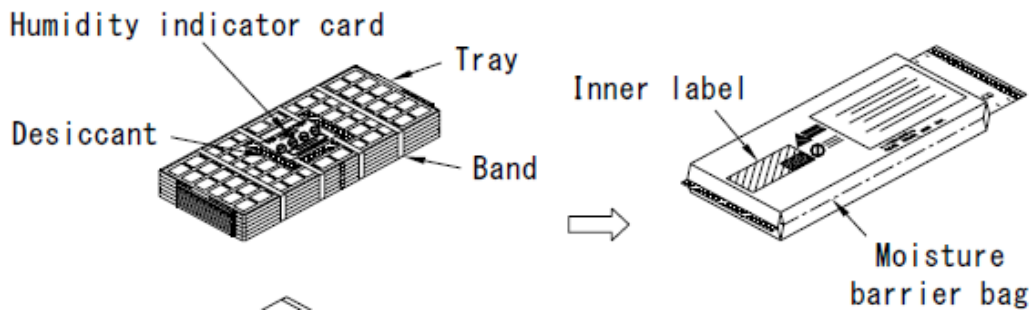
**3a) Actual:5 trays : 5 trays (Package) + 1 tray (Lid)**



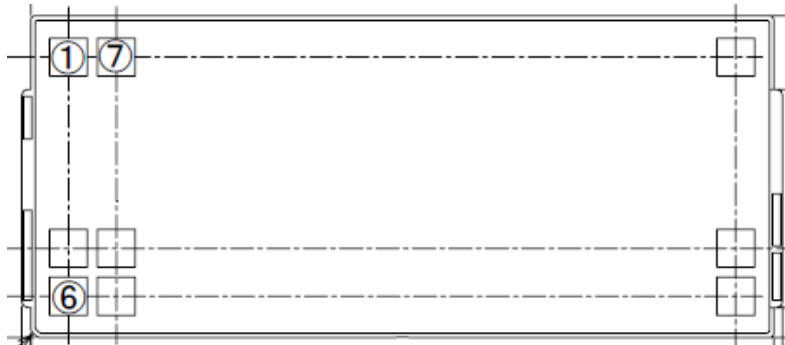
The device mounting order.



**3b) Change(integrate) to:8 trays: 8 trays (Package) + 1 tray (Lid)**



The device mounting order.



## Appendix D. Specific Part Numbers that are affected and change.

Booking P/N (Current)	Booking P/N (change to)	Wire material	Lead Plating	Lead Frame	Packing form
R5F363A6DFB#U0	R5F363A6DFB#30	Au --> Cu	SnCu --> Pure Sn	No Change	5 -->8 trays
R5F363A6DFB#V2	R5F363A6DFB#30	Au --> Cu	Pure Sn (no change)	No Change	8 trays (no change)
R5F363A6NFB#U0	R5F363A6NFB#30	Au --> Cu	SnCu --> Pure Sn	No Change	5 -->8 trays
R5F363A6NFB#V2	R5F363A6NFB#30	Au --> Cu	Pure Sn (no change)	No Change	8 trays (no change)
R5F363AEDFB#U0	R5F363AEDFB#30	Au --> Cu	SnCu --> Pure Sn	No Change	5 -->8 trays
R5F363AEDFB#V2	R5F363AEDFB#30	Au --> Cu	Pure Sn (no change)	No Change	8 trays (no change)
R5F363AENFB#U0	R5F363AENFB#30	Au --> Cu	SnCu --> Pure Sn	No Change	5 -->8 trays
R5F363AENFB#V2	R5F363AENFB#30	Au --> Cu	Pure Sn (no change)	No Change	8 trays (no change)
R5F363AKDFB#U0	R5F363AKDFB#30	Au --> Cu	SnCu --> Pure Sn	No Change	5 -->8 trays
R5F363AKDFB#V2	R5F363AKDFB#30	Au --> Cu	Pure Sn (no change)	No Change	8 trays (no change)
R5F363AKNFB#U0	R5F363AKNFB#30	Au --> Cu	SnCu --> Pure Sn	No Change	5 -->8 trays
R5F363AKNFB#V2	R5F363AKNFB#30	Au --> Cu	Pure Sn (no change)	No Change	8 trays (no change)
R5F363AMDFB#U0	R5F363AMDFB#30	Au --> Cu	SnCu --> Pure Sn	No Change	5 -->8 trays
R5F363AMDFB#V2	R5F363AMDFB#30	Au --> Cu	Pure Sn (no change)	No Change	8 trays (no change)
R5F363AMNFB#U0	R5F363AMNFB#30	Au --> Cu	SnCu --> Pure Sn	No Change	5 -->8 trays
R5F363AMNFB#V2	R5F363AMNFB#30	Au --> Cu	Pure Sn (no change)	No Change	8 trays (no change)
R5F363AMNFB#W2	R5F363AMNFB#50	Au --> Cu	SnCu --> Pure Sn	No Change	tape&reel(no change)
R5F363AMNFB#X6	R5F363AMNFB#50	Au --> Cu	Pure Sn (no change)	No Change	tape&reel(no change)
R5F363B6DFE#U0	R5F363B6DFE#30	Au --> Cu	SnCu --> Pure Sn	No Change	5 -->8 trays
R5F363B6NFE#U0	R5F363B6NFE#30	Au --> Cu	SnCu --> Pure Sn	No Change	5 -->8 trays
R5F363BEDFE#U0	R5F363BEDFE#30	Au --> Cu	SnCu --> Pure Sn	No Change	5 -->8 trays
R5F363BENFE#U0	R5F363BENFE#30	Au --> Cu	SnCu --> Pure Sn	No Change	5 -->8 trays
R5F363BKDFE#U0	R5F363BKDFE#30	Au --> Cu	SnCu --> Pure Sn	No Change	5 -->8 trays
R5F363BKNFE#U0	R5F363BKNFE#30	Au --> Cu	SnCu --> Pure Sn	No Change	5 -->8 trays
R5F363BMDFE#U0	R5F363BMDFE#30	Au --> Cu	SnCu --> Pure Sn	No Change	5 -->8 trays
R5F363BMNFE#U0	R5F363BMNFE#30	Au --> Cu	SnCu --> Pure Sn	No Change	5 -->8 trays
R5F3640DDFB#U0	R5F3640DDFB#30	Au --> Cu	SnCu --> Pure Sn	No Change	5 -->8 trays
R5F3640DDFB#V2	R5F3640DDFB#30	Au --> Cu	Pure Sn (no change)	No Change	8 trays (no change)
R5F3640DNFB#U0	R5F3640DNFB#30	Au --> Cu	SnCu --> Pure Sn	No Change	5 -->8 trays
R5F3640DNFB#V2	R5F3640DNFB#30	Au --> Cu	Pure Sn (no change)	No Change	8 trays (no change)
R5F3640MDFB#U0	R5F3640MDFB#30	Au --> Cu	SnCu --> Pure Sn	No Change	5 -->8 trays
R5F3640MDFB#V2	R5F3640MDFB#30	Au --> Cu	Pure Sn (no change)	No Change	8 trays (no change)
R5F3640MNFB#U0	R5F3640MNFB#30	Au --> Cu	SnCu --> Pure Sn	No Change	5 -->8 trays
R5F3640MNFB#V2	R5F3640MNFB#30	Au --> Cu	Pure Sn (no change)	No Change	8 trays (no change)
R5F364A6DFB#U0	R5F364A6DFB#30	Au --> Cu	SnCu --> Pure Sn	No Change	5 -->8 trays
R5F364A6DFB#V2	R5F364A6DFB#30	Au --> Cu	Pure Sn (no change)	No Change	8 trays (no change)
R5F364A6NFB#U0	R5F364A6NFB#30	Au --> Cu	SnCu --> Pure Sn	No Change	5 -->8 trays
R5F364A6NFB#V2	R5F364A6NFB#30	Au --> Cu	Pure Sn (no change)	No Change	8 trays (no change)
R5F364AEDFB#U0	R5F364AEDFB#30	Au --> Cu	SnCu --> Pure Sn	No Change	5 -->8 trays
R5F364AEDFB#V2	R5F364AEDFB#30	Au --> Cu	Pure Sn (no change)	No Change	8 trays (no change)
R5F364AENFB#U0	R5F364AENFB#30	Au --> Cu	SnCu --> Pure Sn	No Change	5 -->8 trays
R5F364AENFB#V2	R5F364AENFB#30	Au --> Cu	Pure Sn (no change)	No Change	8 trays (no change)
R5F364AKDFB#U0	R5F364AKDFB#30	Au --> Cu	SnCu --> Pure Sn	No Change	5 -->8 trays
R5F364AKDFB#V2	R5F364AKDFB#30	Au --> Cu	Pure Sn (no change)	No Change	8 trays (no change)
R5F364AKNFB#U0	R5F364AKNFB#30	Au --> Cu	SnCu --> Pure Sn	No Change	5 -->8 trays
R5F364AKNFB#V2	R5F364AKNFB#30	Au --> Cu	Pure Sn (no change)	No Change	8 trays (no change)
R5F364AMDFB#U0	R5F364AMDFB#30	Au --> Cu	SnCu --> Pure Sn	No Change	5 -->8 trays



Booking P/N (Current)	Booking P/N (change to)	Wire material	Lead Plating	Lead Frame	Packing form
R5F364AMDFB#V2	R5F364AMDFB#30	Au --> Cu	Pure Sn (no change)	No Change	8 trays (no change)
R5F364AMNFB#U0	R5F364AMNFB#30	Au --> Cu	SnCu --> Pure Sn	No Change	5 -->8 trays
R5F364AMNFB#V2	R5F364AMNFB#30	Au --> Cu	Pure Sn (no change)	No Change	8 trays (no change)
R5F36406CDFB#V2	R5F36406CDFB#30	Au --> Cu	Pure Sn (no change)	No Change	8 trays (no change)
R5F36406CNFB#V2	R5F36406CNFB#30	Au --> Cu	Pure Sn (no change)	No Change	8 trays (no change)
R5F3640ECDFB#V2	R5F3640ECDFB#30	Au --> Cu	Pure Sn (no change)	No Change	8 trays (no change)
R5F3640ECNFB#V2	R5F3640ECNFB#30	Au --> Cu	Pure Sn (no change)	No Change	8 trays (no change)
R5F3640KCDFB#V2	R5F3640KCDFB#30	Au --> Cu	Pure Sn (no change)	No Change	8 trays (no change)
R5F3640KCNFB#V2	R5F3640KCNFB#30	Au --> Cu	Pure Sn (no change)	No Change	8 trays (no change)
R5F3640MCDFB#V2	R5F3640MCDFB#30	Au --> Cu	Pure Sn (no change)	No Change	8 trays (no change)
R5F3640MCNFB#V2	R5F3640MCNFB#30	Au --> Cu	Pure Sn (no change)	No Change	8 trays (no change)
R5F3640NCDFB#V2	R5F3640NCDFB#30	Au --> Cu	Pure Sn (no change)	No Change	8 trays (no change)
R5F3640NCNFB#V2	R5F3640NCNFB#30	Au --> Cu	Pure Sn (no change)	No Change	8 trays (no change)
R5F36506DFB#U0	R5F36506DFB#30	Au --> Cu	SnCu --> Pure Sn	No Change	5 -->8 trays
R5F36506DFB#V2	R5F36506DFB#30	Au --> Cu	Pure Sn (no change)	No Change	8 trays (no change)
R5F36506NFB#U0	R5F36506NFB#30	Au --> Cu	SnCu --> Pure Sn	No Change	5 -->8 trays
R5F36506NFB#V2	R5F36506NFB#30	Au --> Cu	Pure Sn (no change)	No Change	8 trays (no change)
R5F3650EDFB#U0	R5F3650EDFB#30	Au --> Cu	SnCu --> Pure Sn	No Change	5 -->8 trays
R5F3650EDFB#V2	R5F3650EDFB#30	Au --> Cu	Pure Sn (no change)	No Change	8 trays (no change)
R5F3650ENFB#U0	R5F3650ENFB#30	Au --> Cu	SnCu --> Pure Sn	No Change	5 -->8 trays
R5F3650ENFB#V2	R5F3650ENFB#30	Au --> Cu	Pure Sn (no change)	No Change	8 trays (no change)
R5F3650KDFB#U0	R5F3650KDFB#30	Au --> Cu	SnCu --> Pure Sn	No Change	5 -->8 trays
R5F3650KDFB#V2	R5F3650KDFB#30	Au --> Cu	Pure Sn (no change)	No Change	8 trays (no change)
R5F3650KNFB#U0	R5F3650KNFB#30	Au --> Cu	SnCu --> Pure Sn	No Change	5 -->8 trays
R5F3650KNFB#V2	R5F3650KNFB#30	Au --> Cu	Pure Sn (no change)	No Change	8 trays (no change)
R5F3650MDFB#U0	R5F3650MDFB#30	Au --> Cu	SnCu --> Pure Sn	No Change	5 -->8 trays
R5F3650MDFB#V2	R5F3650MDFB#30	Au --> Cu	Pure Sn (no change)	No Change	8 trays (no change)
R5F3650MNFB#U0	R5F3650MNFB#30	Au --> Cu	SnCu --> Pure Sn	No Change	5 -->8 trays
R5F3650MNFB#V2	R5F3650MNFB#30	Au --> Cu	Pure Sn (no change)	No Change	8 trays (no change)
R5F3650NDFB#U0	R5F3650NDFB#30	Au --> Cu	SnCu --> Pure Sn	No Change	5 -->8 trays
R5F3650NDFB#V2	R5F3650NDFB#30	Au --> Cu	Pure Sn (no change)	No Change	8 trays (no change)
R5F3650NNFB#U0	R5F3650NNFB#30	Au --> Cu	SnCu --> Pure Sn	No Change	5 -->8 trays
R5F3650NNFB#V2	R5F3650NNFB#30	Au --> Cu	Pure Sn (no change)	No Change	8 trays (no change)
R5F3650RDFB#U0	R5F3650RDFB#30	Au --> Cu	SnCu --> Pure Sn	No Change	5 -->8 trays
R5F3650RDFB#V2	R5F3650RDFB#30	Au --> Cu	Pure Sn (no change)	No Change	8 trays (no change)
R5F3650RNFB#U0	R5F3650RNFB#30	Au --> Cu	SnCu --> Pure Sn	No Change	5 -->8 trays
R5F3650RNFB#V2	R5F3650RNFB#30	Au --> Cu	Pure Sn (no change)	No Change	8 trays (no change)
R5F3650TDFB#U0	R5F3650TDFB#30	Au --> Cu	SnCu --> Pure Sn	No Change	5 -->8 trays
R5F3650TDFB#V2	R5F3650TDFB#30	Au --> Cu	Pure Sn (no change)	No Change	8 trays (no change)
R5F3650TNFB#U0	R5F3650TNFB#30	Au --> Cu	SnCu --> Pure Sn	No Change	5 -->8 trays
R5F3650TNFB#V2	R5F3650TNFB#30	Au --> Cu	Pure Sn (no change)	No Change	8 trays (no change)
R5F36506CDFB#V2	R5F36506CDFB#30	Au --> Cu	Pure Sn (no change)	No Change	8 trays (no change)
R5F36506CNFB#V2	R5F36506CNFB#30	Au --> Cu	Pure Sn (no change)	No Change	8 trays (no change)
R5F3650ECDFB#V2	R5F3650ECDFB#30	Au --> Cu	Pure Sn (no change)	No Change	8 trays (no change)
R5F3650ECNFB#V2	R5F3650ECNFB#30	Au --> Cu	Pure Sn (no change)	No Change	8 trays (no change)
R5F3650KCDFB#V2	R5F3650KCDFB#30	Au --> Cu	Pure Sn (no change)	No Change	8 trays (no change)
R5F3650KCNFB#V2	R5F3650KCNFB#30	Au --> Cu	Pure Sn (no change)	No Change	8 trays (no change)
R5F3650MCDFB#V2	R5F3650MCDFB#30	Au --> Cu	Pure Sn (no change)	No Change	8 trays (no change)
R5F3650MCNFB#V2	R5F3650MCNFB#30	Au --> Cu	Pure Sn (no change)	No Change	8 trays (no change)

Booking P/N (Current)	Booking P/N (change to)	Wire material	Lead Plating	Lead Frame	Packing form
R5F3650NCDFB#V2	R5F3650NCDFB#30	Au --> Cu	Pure Sn (no change)	No Change	8 trays (no change)
R5F3650NCNFB#V2	R5F3650NCNFB#30	Au --> Cu	Pure Sn (no change)	No Change	8 trays (no change)
R5F36CA6DFB#U0	R5F36CA6DFB#30	Au --> Cu	SnCu --> Pure Sn	No Change	5 -->8 trays
R5F36CA6DFB#V2	R5F36CA6DFB#30	Au --> Cu	Pure Sn (no change)	No Change	8 trays (no change)
R5F36CA6NFB#U0	R5F36CA6NFB#30	Au --> Cu	SnCu --> Pure Sn	No Change	5 -->8 trays
R5F36CA6NFB#V2	R5F36CA6NFB#30	Au --> Cu	Pure Sn (no change)	No Change	8 trays (no change)
R5F36CAEDFB#U0	R5F36CAEDFB#30	Au --> Cu	SnCu --> Pure Sn	No Change	5 -->8 trays
R5F36CAEDFB#V2	R5F36CAEDFB#30	Au --> Cu	Pure Sn (no change)	No Change	8 trays (no change)
R5F36CAENFB#U0	R5F36CAENFB#30	Au --> Cu	SnCu --> Pure Sn	No Change	5 -->8 trays
R5F36CAENFB#V2	R5F36CAENFB#30	Au --> Cu	Pure Sn (no change)	No Change	8 trays (no change)
R5F36CAKDFB#U0	R5F36CAKDFB#30	Au --> Cu	SnCu --> Pure Sn	No Change	5 -->8 trays
R5F36CAKDFB#V2	R5F36CAKDFB#30	Au --> Cu	Pure Sn (no change)	No Change	8 trays (no change)
R5F36CAKNFB#U0	R5F36CAKNFB#30	Au --> Cu	SnCu --> Pure Sn	No Change	5 -->8 trays
R5F36CAKNFB#V2	R5F36CAKNFB#30	Au --> Cu	Pure Sn (no change)	No Change	8 trays (no change)
R5F36CAMDFB#U0	R5F36CAMDFB#30	Au --> Cu	SnCu --> Pure Sn	No Change	5 -->8 trays
R5F36CAMDFB#V2	R5F36CAMDFB#30	Au --> Cu	Pure Sn (no change)	No Change	8 trays (no change)
R5F36CAMNFB#U0	R5F36CAMNFB#30	Au --> Cu	SnCu --> Pure Sn	No Change	5 -->8 trays
R5F36CAMNFB#V2	R5F36CAMNFB#30	Au --> Cu	Pure Sn (no change)	No Change	8 trays (no change)
R5F21331CDFP#U0	R5F21331CDFP#30	Au --> Cu	SnCu --> Pure Sn	Pattern A-->Pattern B	5 -->8 trays
R5F21331CDFP#V2	R5F21331CDFP#30	Au --> Cu	Pure Sn (no change)	Pattern A-->Pattern B	8 trays (no change)
R5F21331CDFP#W4	R5F21331CDFP#50	Au --> Cu	SnCu --> Pure Sn	Pattern A-->Pattern B	tape&reel(no change)
R5F21331CDFP#X6	R5F21331CDFP#50	Au --> Cu	Pure Sn (no change)	Pattern A-->Pattern B	tape&reel(no change)
R5F21331CDXXXFP#U0	R5F21331CDXXXFP#30	Au --> Cu	SnCu --> Pure Sn	Pattern A-->Pattern B	5 -->8 trays
R5F21331CDXXXFP#V2	R5F21331CDXXXFP#30	Au --> Cu	Pure Sn (no change)	Pattern A-->Pattern B	8 trays (no change)
R5F21331CDXXXFP#W4	R5F21331CDXXXFP#50	Au --> Cu	SnCu --> Pure Sn	Pattern A-->Pattern B	tape&reel(no change)
R5F21331CDXXXFP#X6	R5F21331CDXXXFP#50	Au --> Cu	Pure Sn (no change)	Pattern A-->Pattern B	tape&reel(no change)
R5F21331CNFP#U0	R5F21331CNFP#30	Au --> Cu	SnCu --> Pure Sn	Pattern A-->Pattern B	5 -->8 trays
R5F21331CNFP#V2	R5F21331CNFP#30	Au --> Cu	Pure Sn (no change)	Pattern A-->Pattern B	8 trays (no change)
R5F21331CNFP#W4	R5F21331CNFP#50	Au --> Cu	SnCu --> Pure Sn	Pattern A-->Pattern B	tape&reel(no change)
R5F21331CNFP#X6	R5F21331CNFP#50	Au --> Cu	Pure Sn (no change)	Pattern A-->Pattern B	tape&reel(no change)
R5F21331CNXXXFP#U0	R5F21331CNXXXFP#30	Au --> Cu	SnCu --> Pure Sn	Pattern A-->Pattern B	5 -->8 trays
R5F21331CNXXXFP#V2	R5F21331CNXXXFP#30	Au --> Cu	Pure Sn (no change)	Pattern A-->Pattern B	8 trays (no change)
R5F21331CNXXXFP#W4	R5F21331CNXXXFP#50	Au --> Cu	SnCu --> Pure Sn	Pattern A-->Pattern B	tape&reel(no change)
R5F21331CNXXXFP#X6	R5F21331CNXXXFP#50	Au --> Cu	Pure Sn (no change)	Pattern A-->Pattern B	tape&reel(no change)
R5F21332CDFP#U0	R5F21332CDFP#30	Au --> Cu	SnCu --> Pure Sn	Pattern A-->Pattern B	5 -->8 trays
R5F21332CDFP#V2	R5F21332CDFP#30	Au --> Cu	Pure Sn (no change)	Pattern A-->Pattern B	8 trays (no change)
R5F21332CDFP#W4	R5F21332CDFP#50	Au --> Cu	SnCu --> Pure Sn	Pattern A-->Pattern B	tape&reel(no change)
R5F21332CDFP#X6	R5F21332CDFP#50	Au --> Cu	Pure Sn (no change)	Pattern A-->Pattern B	tape&reel(no change)
R5F21332CDXXXFP#U0	R5F21332CDXXXFP#30	Au --> Cu	SnCu --> Pure Sn	Pattern A-->Pattern B	5 -->8 trays
R5F21332CDXXXFP#V2	R5F21332CDXXXFP#30	Au --> Cu	Pure Sn (no change)	Pattern A-->Pattern B	8 trays (no change)
R5F21332CDXXXFP#W4	R5F21332CDXXXFP#50	Au --> Cu	SnCu --> Pure Sn	Pattern A-->Pattern B	tape&reel(no change)
R5F21332CDXXXFP#X6	R5F21332CDXXXFP#50	Au --> Cu	Pure Sn (no change)	Pattern A-->Pattern B	tape&reel(no change)
R5F21332CNFP#U0	R5F21332CNFP#30	Au --> Cu	SnCu --> Pure Sn	Pattern A-->Pattern B	5 -->8 trays
R5F21332CNFP#V2	R5F21332CNFP#30	Au --> Cu	Pure Sn (no change)	Pattern A-->Pattern B	8 trays (no change)
R5F21332CNFP#W4	R5F21332CNFP#50	Au --> Cu	SnCu --> Pure Sn	Pattern A-->Pattern B	tape&reel(no change)
R5F21332CNFP#X6	R5F21332CNFP#50	Au --> Cu	Pure Sn (no change)	Pattern A-->Pattern B	tape&reel(no change)
R5F21332CNXXXFP#U0	R5F21332CNXXXFP#30	Au --> Cu	SnCu --> Pure Sn	Pattern A-->Pattern B	5 -->8 trays
R5F21332CNXXXFP#V2	R5F21332CNXXXFP#30	Au --> Cu	Pure Sn (no change)	Pattern A-->Pattern B	8 trays (no change)
R5F21332CNXXXFP#W4	R5F21332CNXXXFP#50	Au --> Cu	SnCu --> Pure Sn	Pattern A-->Pattern B	tape&reel(no change)



Booking P/N (Current)	Booking P/N (change to)	Wire material	Lead Plating	Lead Frame	Packing form
R5F21331DDFP#V0	R5F21331DDFP#30	Au --> Cu	Pure Sn (no change)	Pattern A-->Pattern B	5 -->8 trays
R5F21331DDFP#V2	R5F21331DDFP#30	Au --> Cu	Pure Sn (no change)	Pattern A-->Pattern B	8 trays (no change)
R5F21331DDFP#X4	R5F21331DDFP#50	Au --> Cu	Pure Sn (no change)	Pattern A-->Pattern B	tape&reel(no change)
R5F21331DDFP#X6	R5F21331DDFP#50	Au --> Cu	Pure Sn (no change)	Pattern A-->Pattern B	tape&reel(no change)
R5F21331DDXXXFP#V0	R5F21331DDXXXFP#30	Au --> Cu	Pure Sn (no change)	Pattern A-->Pattern B	5 -->8 trays
R5F21331DDXXXFP#V2	R5F21331DDXXXFP#30	Au --> Cu	Pure Sn (no change)	Pattern A-->Pattern B	8 trays (no change)
R5F21331DDXXXFP#X4	R5F21331DDXXXFP#50	Au --> Cu	Pure Sn (no change)	Pattern A-->Pattern B	tape&reel(no change)
R5F21331DDXXXFP#X6	R5F21331DDXXXFP#50	Au --> Cu	Pure Sn (no change)	Pattern A-->Pattern B	tape&reel(no change)
R5F21331DNFP#V0	R5F21331DNFP#30	Au --> Cu	Pure Sn (no change)	Pattern A-->Pattern B	5 -->8 trays
R5F21331DNFP#V2	R5F21331DNFP#30	Au --> Cu	Pure Sn (no change)	Pattern A-->Pattern B	8 trays (no change)
R5F21331DNFP#X4	R5F21331DNFP#50	Au --> Cu	Pure Sn (no change)	Pattern A-->Pattern B	tape&reel(no change)
R5F21331DNFP#X6	R5F21331DNFP#50	Au --> Cu	Pure Sn (no change)	Pattern A-->Pattern B	tape&reel(no change)
R5F21331DNXXXFP#V0	R5F21331DNXXXFP#30	Au --> Cu	Pure Sn (no change)	Pattern A-->Pattern B	5 -->8 trays
R5F21331DNXXXFP#V2	R5F21331DNXXXFP#30	Au --> Cu	Pure Sn (no change)	Pattern A-->Pattern B	8 trays (no change)
R5F21331DNXXXFP#X4	R5F21331DNXXXFP#50	Au --> Cu	Pure Sn (no change)	Pattern A-->Pattern B	tape&reel(no change)
R5F21331DNXXXFP#X6	R5F21331DNXXXFP#50	Au --> Cu	Pure Sn (no change)	Pattern A-->Pattern B	tape&reel(no change)
R5F21332DDFP#V0	R5F21332DDFP#30	Au --> Cu	Pure Sn (no change)	Pattern A-->Pattern B	5 -->8 trays
R5F21332DDFP#V2	R5F21332DDFP#30	Au --> Cu	Pure Sn (no change)	Pattern A-->Pattern B	8 trays (no change)
R5F21332DDFP#X4	R5F21332DDFP#50	Au --> Cu	Pure Sn (no change)	Pattern A-->Pattern B	tape&reel(no change)
R5F21332DDFP#X6	R5F21332DDFP#50	Au --> Cu	Pure Sn (no change)	Pattern A-->Pattern B	tape&reel(no change)
R5F21332DDXXXFP#V0	R5F21332DDXXXFP#30	Au --> Cu	Pure Sn (no change)	Pattern A-->Pattern B	5 -->8 trays
R5F21332DDXXXFP#V2	R5F21332DDXXXFP#30	Au --> Cu	Pure Sn (no change)	Pattern A-->Pattern B	8 trays (no change)
R5F21332DDXXXFP#X4	R5F21332DDXXXFP#50	Au --> Cu	Pure Sn (no change)	Pattern A-->Pattern B	tape&reel(no change)
R5F21332DDXXXFP#X6	R5F21332DDXXXFP#50	Au --> Cu	Pure Sn (no change)	Pattern A-->Pattern B	tape&reel(no change)
R5F21332DNFP#V0	R5F21332DNFP#30	Au --> Cu	Pure Sn (no change)	Pattern A-->Pattern B	5 -->8 trays
R5F21332DNFP#V2	R5F21332DNFP#30	Au --> Cu	Pure Sn (no change)	Pattern A-->Pattern B	8 trays (no change)
R5F21332DNFP#X4	R5F21332DNFP#50	Au --> Cu	Pure Sn (no change)	Pattern A-->Pattern B	tape&reel(no change)
R5F21332DNFP#X6	R5F21332DNFP#50	Au --> Cu	Pure Sn (no change)	Pattern A-->Pattern B	tape&reel(no change)
R5F21332DNXXXFP#V0	R5F21332DNXXXFP#30	Au --> Cu	Pure Sn (no change)	Pattern A-->Pattern B	5 -->8 trays
R5F21332DNXXXFP#V2	R5F21332DNXXXFP#30	Au --> Cu	Pure Sn (no change)	Pattern A-->Pattern B	8 trays (no change)
R5F21332DNXXXFP#X4	R5F21332DNXXXFP#50	Au --> Cu	Pure Sn (no change)	Pattern A-->Pattern B	tape&reel(no change)
R5F21332DNXXXFP#X6	R5F21332DNXXXFP#50	Au --> Cu	Pure Sn (no change)	Pattern A-->Pattern B	tape&reel(no change)
R5F21334DDFP#V0	R5F21334DDFP#30	Au --> Cu	Pure Sn (no change)	Pattern A-->Pattern B	5 -->8 trays
R5F21334DDFP#V2	R5F21334DDFP#30	Au --> Cu	Pure Sn (no change)	Pattern A-->Pattern B	8 trays (no change)
R5F21334DDFP#X4	R5F21334DDFP#50	Au --> Cu	Pure Sn (no change)	Pattern A-->Pattern B	tape&reel(no change)
R5F21334DDFP#X6	R5F21334DDFP#50	Au --> Cu	Pure Sn (no change)	Pattern A-->Pattern B	tape&reel(no change)
R5F21334DDXXXFP#V0	R5F21334DDXXXFP#30	Au --> Cu	Pure Sn (no change)	Pattern A-->Pattern B	5 -->8 trays
R5F21334DDXXXFP#V2	R5F21334DDXXXFP#30	Au --> Cu	Pure Sn (no change)	Pattern A-->Pattern B	8 trays (no change)
R5F21334DDXXXFP#X4	R5F21334DDXXXFP#50	Au --> Cu	Pure Sn (no change)	Pattern A-->Pattern B	tape&reel(no change)
R5F21334DDXXXFP#X6	R5F21334DDXXXFP#50	Au --> Cu	Pure Sn (no change)	Pattern A-->Pattern B	tape&reel(no change)
R5F21334DNFP#V0	R5F21334DNFP#30	Au --> Cu	Pure Sn (no change)	Pattern A-->Pattern B	5 -->8 trays
R5F21334DNFP#V2	R5F21334DNFP#30	Au --> Cu	Pure Sn (no change)	Pattern A-->Pattern B	8 trays (no change)
R5F21334DNFP#X4	R5F21334DNFP#50	Au --> Cu	Pure Sn (no change)	Pattern A-->Pattern B	tape&reel(no change)
R5F21334DNFP#X6	R5F21334DNFP#50	Au --> Cu	Pure Sn (no change)	Pattern A-->Pattern B	tape&reel(no change)
R5F21334DNXXXFP#V0	R5F21334DNXXXFP#30	Au --> Cu	Pure Sn (no change)	Pattern A-->Pattern B	5 -->8 trays
R5F21334DNXXXFP#V2	R5F21334DNXXXFP#30	Au --> Cu	Pure Sn (no change)	Pattern A-->Pattern B	8 trays (no change)
R5F21334DNXXXFP#X4	R5F21334DNXXXFP#50	Au --> Cu	Pure Sn (no change)	Pattern A-->Pattern B	tape&reel(no change)
R5F21334DNXXXFP#X6	R5F21334DNXXXFP#50	Au --> Cu	Pure Sn (no change)	Pattern A-->Pattern B	tape&reel(no change)
R5F21335DDFP#V0	R5F21335DDFP#30	Au --> Cu	Pure Sn (no change)	Pattern A-->Pattern B	5 -->8 trays

Booking P/N (Current)	Booking P/N (change to)	Wire material	Lead Plating	Lead Frame	Packing form
R5F21335DDFP#V2	R5F21335DDFP#30	Au --> Cu	Pure Sn (no change)	Pattern A-->Pattern B	8 trays (no change)
R5F21335DDFP#X4	R5F21335DDFP#50	Au --> Cu	Pure Sn (no change)	Pattern A-->Pattern B	tape&reel(no change)
R5F21335DDFP#X6	R5F21335DDFP#50	Au --> Cu	Pure Sn (no change)	Pattern A-->Pattern B	tape&reel(no change)
R5F21335DDXXXFP#V0	R5F21335DDXXXFP#30	Au --> Cu	Pure Sn (no change)	Pattern A-->Pattern B	5 -->8 trays
R5F21335DDXXXFP#V2	R5F21335DDXXXFP#30	Au --> Cu	Pure Sn (no change)	Pattern A-->Pattern B	8 trays (no change)
R5F21335DDXXXFP#X4	R5F21335DDXXXFP#50	Au --> Cu	Pure Sn (no change)	Pattern A-->Pattern B	tape&reel(no change)
R5F21335DDXXXFP#X6	R5F21335DDXXXFP#50	Au --> Cu	Pure Sn (no change)	Pattern A-->Pattern B	tape&reel(no change)
R5F21335DNFP#V0	R5F21335DNFP#30	Au --> Cu	Pure Sn (no change)	Pattern A-->Pattern B	5 -->8 trays
R5F21335DNFP#V2	R5F21335DNFP#30	Au --> Cu	Pure Sn (no change)	Pattern A-->Pattern B	8 trays (no change)
R5F21335DNFP#X4	R5F21335DNFP#50	Au --> Cu	Pure Sn (no change)	Pattern A-->Pattern B	tape&reel(no change)
R5F21335DNFP#X6	R5F21335DNFP#50	Au --> Cu	Pure Sn (no change)	Pattern A-->Pattern B	tape&reel(no change)
R5F21335DNXXXFP#V0	R5F21335DNXXXFP#30	Au --> Cu	Pure Sn (no change)	Pattern A-->Pattern B	5 -->8 trays
R5F21335DNXXXFP#V2	R5F21335DNXXXFP#30	Au --> Cu	Pure Sn (no change)	Pattern A-->Pattern B	8 trays (no change)
R5F21335DNXXXFP#X4	R5F21335DNXXXFP#50	Au --> Cu	Pure Sn (no change)	Pattern A-->Pattern B	tape&reel(no change)
R5F21335DNXXXFP#X6	R5F21335DNXXXFP#50	Au --> Cu	Pure Sn (no change)	Pattern A-->Pattern B	tape&reel(no change)
R5F21336DDFP#V0	R5F21336DDFP#30	Au --> Cu	Pure Sn (no change)	Pattern A-->Pattern B	5 -->8 trays
R5F21336DDFP#V2	R5F21336DDFP#30	Au --> Cu	Pure Sn (no change)	Pattern A-->Pattern B	8 trays (no change)
R5F21336DDFP#X4	R5F21336DDFP#50	Au --> Cu	Pure Sn (no change)	Pattern A-->Pattern B	tape&reel(no change)
R5F21336DDFP#X6	R5F21336DDFP#50	Au --> Cu	Pure Sn (no change)	Pattern A-->Pattern B	tape&reel(no change)
R5F21336DDXXXFP#V0	R5F21336DDXXXFP#30	Au --> Cu	Pure Sn (no change)	Pattern A-->Pattern B	5 -->8 trays
R5F21336DDXXXFP#V2	R5F21336DDXXXFP#30	Au --> Cu	Pure Sn (no change)	Pattern A-->Pattern B	8 trays (no change)
R5F21336DDXXXFP#X4	R5F21336DDXXXFP#50	Au --> Cu	Pure Sn (no change)	Pattern A-->Pattern B	tape&reel(no change)
R5F21336DDXXXFP#X6	R5F21336DDXXXFP#50	Au --> Cu	Pure Sn (no change)	Pattern A-->Pattern B	tape&reel(no change)
R5F21336DNFP#V0	R5F21336DNFP#30	Au --> Cu	Pure Sn (no change)	Pattern A-->Pattern B	5 -->8 trays
R5F21336DNFP#V2	R5F21336DNFP#30	Au --> Cu	Pure Sn (no change)	Pattern A-->Pattern B	8 trays (no change)
R5F21336DNFP#X4	R5F21336DNFP#50	Au --> Cu	Pure Sn (no change)	Pattern A-->Pattern B	tape&reel(no change)
R5F21336DNFP#X6	R5F21336DNFP#50	Au --> Cu	Pure Sn (no change)	Pattern A-->Pattern B	tape&reel(no change)
R5F21336DNXXXFP#V0	R5F21336DNXXXFP#30	Au --> Cu	Pure Sn (no change)	Pattern A-->Pattern B	5 -->8 trays
R5F21336DNXXXFP#V2	R5F21336DNXXXFP#30	Au --> Cu	Pure Sn (no change)	Pattern A-->Pattern B	8 trays (no change)
R5F21336DNXXXFP#X4	R5F21336DNXXXFP#50	Au --> Cu	Pure Sn (no change)	Pattern A-->Pattern B	tape&reel(no change)
R5F21336DNXXXFP#X6	R5F21336DNXXXFP#50	Au --> Cu	Pure Sn (no change)	Pattern A-->Pattern B	tape&reel(no change)
R5F21331MDFP#V0	R5F21331MDFP#30	Au --> Cu	Pure Sn (no change)	No Change	5 -->8 trays
R5F21331MDFP#V2	R5F21331MDFP#30	Au --> Cu	Pure Sn (no change)	No Change	8 trays (no change)
R5F21331MDFP#X4	R5F21331MDFP#50	Au --> Cu	Pure Sn (no change)	No Change	tape&reel(no change)
R5F21331MDFP#X6	R5F21331MDFP#50	Au --> Cu	Pure Sn (no change)	No Change	tape&reel(no change)
R5F21331MDXXXFP#V0	R5F21331MDXXXFP#30	Au --> Cu	Pure Sn (no change)	No Change	5 -->8 trays
R5F21331MDXXXFP#V2	R5F21331MDXXXFP#30	Au --> Cu	Pure Sn (no change)	No Change	8 trays (no change)
R5F21331MDXXXFP#X4	R5F21331MDXXXFP#50	Au --> Cu	Pure Sn (no change)	No Change	tape&reel(no change)
R5F21331MDXXXFP#X6	R5F21331MDXXXFP#50	Au --> Cu	Pure Sn (no change)	No Change	tape&reel(no change)
R5F21331MNFP#V0	R5F21331MNFP#30	Au --> Cu	Pure Sn (no change)	No Change	5 -->8 trays
R5F21331MNFP#V2	R5F21331MNFP#30	Au --> Cu	Pure Sn (no change)	No Change	8 trays (no change)
R5F21331MNFP#X4	R5F21331MNFP#50	Au --> Cu	Pure Sn (no change)	No Change	tape&reel(no change)
R5F21331MNFP#X6	R5F21331MNFP#50	Au --> Cu	Pure Sn (no change)	No Change	tape&reel(no change)
R5F21331MNXXXFP#V0	R5F21331MNXXXFP#30	Au --> Cu	Pure Sn (no change)	No Change	5 -->8 trays
R5F21331MNXXXFP#V2	R5F21331MNXXXFP#30	Au --> Cu	Pure Sn (no change)	No Change	8 trays (no change)
R5F21331MNXXXFP#X4	R5F21331MNXXXFP#50	Au --> Cu	Pure Sn (no change)	No Change	tape&reel(no change)
R5F21331MNXXXFP#X6	R5F21331MNXXXFP#50	Au --> Cu	Pure Sn (no change)	No Change	tape&reel(no change)
R5F21332MDFP#V0	R5F21332MDFP#30	Au --> Cu	Pure Sn (no change)	No Change	5 -->8 trays
R5F21332MDFP#V2	R5F21332MDFP#30	Au --> Cu	Pure Sn (no change)	No Change	8 trays (no change)



Booking P/N (Current)	Booking P/N (change to)	Wire material	Lead Plating	Lead Frame	Packing form
R5F21336MDFP#X6	R5F21336MDFP#50	Au --> Cu	Pure Sn (no change)	No Change	tape&reel(no change)
R5F21336MDXXXFP#V0	R5F21336MDXXXFP#30	Au --> Cu	Pure Sn (no change)	No Change	5 -->8 trays
R5F21336MDXXXFP#V2	R5F21336MDXXXFP#30	Au --> Cu	Pure Sn (no change)	No Change	8 trays (no change)
R5F21336MDXXXFP#X4	R5F21336MDXXXFP#50	Au --> Cu	Pure Sn (no change)	No Change	tape&reel(no change)
R5F21336MDXXXFP#X6	R5F21336MDXXXFP#50	Au --> Cu	Pure Sn (no change)	No Change	tape&reel(no change)
R5F21336MNF#V0	R5F21336MNF#30	Au --> Cu	Pure Sn (no change)	No Change	5 -->8 trays
R5F21336MNF#V2	R5F21336MNF#30	Au --> Cu	Pure Sn (no change)	No Change	8 trays (no change)
R5F21336MNF#X4	R5F21336MNF#50	Au --> Cu	Pure Sn (no change)	No Change	tape&reel(no change)
R5F21336MNF#X6	R5F21336MNF#50	Au --> Cu	Pure Sn (no change)	No Change	tape&reel(no change)
R5F21336MNXXXFP#V0	R5F21336MNXXXFP#30	Au --> Cu	Pure Sn (no change)	No Change	5 -->8 trays
R5F21336MNXXXFP#V2	R5F21336MNXXXFP#30	Au --> Cu	Pure Sn (no change)	No Change	8 trays (no change)
R5F21336MNXXXFP#X4	R5F21336MNXXXFP#50	Au --> Cu	Pure Sn (no change)	No Change	tape&reel(no change)
R5F21336MNXXXFP#X6	R5F21336MNXXXFP#50	Au --> Cu	Pure Sn (no change)	No Change	tape&reel(no change)
R5F21334TDFP#V0	R5F21334TDFP#30	Au --> Cu	Pure Sn (no change)	Pattern A-->Pattern B	8 trays (no change)
R5F21334TDFP#V2	R5F21334TDFP#30	Au --> Cu	Pure Sn (no change)	Pattern A-->Pattern B	8 trays (no change)
R5F21334TDFP#X4	R5F21334TDFP#50	Au --> Cu	Pure Sn (no change)	Pattern A-->Pattern B	tape&reel(no change)
R5F21334TDFP#X6	R5F21334TDFP#50	Au --> Cu	Pure Sn (no change)	Pattern A-->Pattern B	tape&reel(no change)
R5F21334TDXXXFP#V0	R5F21334TDXXXFP#30	Au --> Cu	Pure Sn (no change)	Pattern A-->Pattern B	8 trays (no change)
R5F21334TDXXXFP#V2	R5F21334TDXXXFP#30	Au --> Cu	Pure Sn (no change)	Pattern A-->Pattern B	8 trays (no change)
R5F21334TDXXXFP#X4	R5F21334TDXXXFP#50	Au --> Cu	Pure Sn (no change)	Pattern A-->Pattern B	tape&reel(no change)
R5F21334TDXXXFP#X6	R5F21334TDXXXFP#50	Au --> Cu	Pure Sn (no change)	Pattern A-->Pattern B	tape&reel(no change)
R5F21334TNFP#V0	R5F21334TNFP#30	Au --> Cu	Pure Sn (no change)	Pattern A-->Pattern B	8 trays (no change)
R5F21334TNFP#V2	R5F21334TNFP#30	Au --> Cu	Pure Sn (no change)	Pattern A-->Pattern B	8 trays (no change)
R5F21334TNFP#X4	R5F21334TNFP#50	Au --> Cu	Pure Sn (no change)	Pattern A-->Pattern B	tape&reel(no change)
R5F21334TNFP#X6	R5F21334TNFP#50	Au --> Cu	Pure Sn (no change)	Pattern A-->Pattern B	tape&reel(no change)
R5F21334TNXXXFP#V0	R5F21334TNXXXFP#30	Au --> Cu	Pure Sn (no change)	Pattern A-->Pattern B	8 trays (no change)
R5F21334TNXXXFP#V2	R5F21334TNXXXFP#30	Au --> Cu	Pure Sn (no change)	Pattern A-->Pattern B	8 trays (no change)
R5F21334TNXXXFP#X4	R5F21334TNXXXFP#50	Au --> Cu	Pure Sn (no change)	Pattern A-->Pattern B	tape&reel(no change)
R5F21334TNXXXFP#X6	R5F21334TNXXXFP#50	Au --> Cu	Pure Sn (no change)	Pattern A-->Pattern B	tape&reel(no change)
R5F21335TDFP#V0	R5F21335TDFP#30	Au --> Cu	Pure Sn (no change)	Pattern A-->Pattern B	8 trays (no change)
R5F21335TDFP#V2	R5F21335TDFP#30	Au --> Cu	Pure Sn (no change)	Pattern A-->Pattern B	8 trays (no change)
R5F21335TDFP#X4	R5F21335TDFP#50	Au --> Cu	Pure Sn (no change)	Pattern A-->Pattern B	tape&reel(no change)
R5F21335TDFP#X6	R5F21335TDFP#50	Au --> Cu	Pure Sn (no change)	Pattern A-->Pattern B	tape&reel(no change)
R5F21335TDXXXFP#V0	R5F21335TDXXXFP#30	Au --> Cu	Pure Sn (no change)	Pattern A-->Pattern B	8 trays (no change)
R5F21335TDXXXFP#V2	R5F21335TDXXXFP#30	Au --> Cu	Pure Sn (no change)	Pattern A-->Pattern B	8 trays (no change)
R5F21335TDXXXFP#X4	R5F21335TDXXXFP#50	Au --> Cu	Pure Sn (no change)	Pattern A-->Pattern B	tape&reel(no change)
R5F21335TDXXXFP#X6	R5F21335TDXXXFP#50	Au --> Cu	Pure Sn (no change)	Pattern A-->Pattern B	tape&reel(no change)
R5F21335TNFP#V0	R5F21335TNFP#30	Au --> Cu	Pure Sn (no change)	Pattern A-->Pattern B	8 trays (no change)
R5F21335TNFP#V2	R5F21335TNFP#30	Au --> Cu	Pure Sn (no change)	Pattern A-->Pattern B	8 trays (no change)
R5F21335TNFP#X4	R5F21335TNFP#50	Au --> Cu	Pure Sn (no change)	Pattern A-->Pattern B	tape&reel(no change)
R5F21335TNFP#X6	R5F21335TNFP#50	Au --> Cu	Pure Sn (no change)	Pattern A-->Pattern B	tape&reel(no change)
R5F21335TNXXXFP#V0	R5F21335TNXXXFP#30	Au --> Cu	Pure Sn (no change)	Pattern A-->Pattern B	8 trays (no change)
R5F21335TNXXXFP#V2	R5F21335TNXXXFP#30	Au --> Cu	Pure Sn (no change)	Pattern A-->Pattern B	8 trays (no change)
R5F21335TNXXXFP#X4	R5F21335TNXXXFP#50	Au --> Cu	Pure Sn (no change)	Pattern A-->Pattern B	tape&reel(no change)
R5F21335TNXXXFP#X6	R5F21335TNXXXFP#50	Au --> Cu	Pure Sn (no change)	Pattern A-->Pattern B	tape&reel(no change)
R5F21336TDFP#V0	R5F21336TDFP#30	Au --> Cu	Pure Sn (no change)	Pattern A-->Pattern B	8 trays (no change)
R5F21336TDFP#V2	R5F21336TDFP#30	Au --> Cu	Pure Sn (no change)	Pattern A-->Pattern B	8 trays (no change)
R5F21336TDFP#X4	R5F21336TDFP#50	Au --> Cu	Pure Sn (no change)	Pattern A-->Pattern B	tape&reel(no change)
R5F21336TDFP#X6	R5F21336TDFP#50	Au --> Cu	Pure Sn (no change)	Pattern A-->Pattern B	tape&reel(no change)

Booking P/N (Current)	Booking P/N (change to)	Wire material	Lead Plating	Lead Frame	Packing form
R5F21336TDXXXFP#V0	R5F21336TDXXXFP#30	Au --> Cu	Pure Sn (no change)	Pattern A-->Pattern B	8 trays (no change)
R5F21336TDXXXFP#V2	R5F21336TDXXXFP#30	Au --> Cu	Pure Sn (no change)	Pattern A-->Pattern B	8 trays (no change)
R5F21336TDXXXFP#X4	R5F21336TDXXXFP#50	Au --> Cu	Pure Sn (no change)	Pattern A-->Pattern B	tape&reel(no change)
R5F21336TDXXXFP#X6	R5F21336TDXXXFP#50	Au --> Cu	Pure Sn (no change)	Pattern A-->Pattern B	tape&reel(no change)
R5F21336TNFP#V0	R5F21336TNFP#30	Au --> Cu	Pure Sn (no change)	Pattern A-->Pattern B	8 trays (no change)
R5F21336TNFP#V2	R5F21336TNFP#30	Au --> Cu	Pure Sn (no change)	Pattern A-->Pattern B	8 trays (no change)
R5F21336TNFP#X4	R5F21336TNFP#50	Au --> Cu	Pure Sn (no change)	Pattern A-->Pattern B	tape&reel(no change)
R5F21336TNFP#X6	R5F21336TNFP#50	Au --> Cu	Pure Sn (no change)	Pattern A-->Pattern B	tape&reel(no change)
R5F21336TNXXXFP#V0	R5F21336TNXXXFP#30	Au --> Cu	Pure Sn (no change)	Pattern A-->Pattern B	8 trays (no change)
R5F21336TNXXXFP#V2	R5F21336TNXXXFP#30	Au --> Cu	Pure Sn (no change)	Pattern A-->Pattern B	8 trays (no change)
R5F21336TNXXXFP#X4	R5F21336TNXXXFP#50	Au --> Cu	Pure Sn (no change)	Pattern A-->Pattern B	tape&reel(no change)
R5F21336TNXXXFP#X6	R5F21336TNXXXFP#50	Au --> Cu	Pure Sn (no change)	Pattern A-->Pattern B	tape&reel(no change)
R5F21344CDFP#U0	R5F21344CDFP#30	Au --> Cu	SnCu --> Pure Sn	No Change	5 -->8 trays
R5F21344CDFP#W4	R5F21344CDFP#50	Au --> Cu	SnCu --> Pure Sn	No Change	tape&reel(no change)
R5F21344CDXXXFP#U0	R5F21344CDXXXFP#30	Au --> Cu	SnCu --> Pure Sn	No Change	5 -->8 trays
R5F21344CDXXXFP#W4	R5F21344CDXXXFP#50	Au --> Cu	SnCu --> Pure Sn	No Change	tape&reel(no change)
R5F21344CNFP#U0	R5F21344CNFP#30	Au --> Cu	SnCu --> Pure Sn	No Change	5 -->8 trays
R5F21344CNFP#W4	R5F21344CNFP#50	Au --> Cu	SnCu --> Pure Sn	No Change	tape&reel(no change)
R5F21344CNXXXFP#U0	R5F21344CNXXXFP#30	Au --> Cu	SnCu --> Pure Sn	No Change	5 -->8 trays
R5F21344CNXXXFP#W4	R5F21344CNXXXFP#50	Au --> Cu	SnCu --> Pure Sn	No Change	tape&reel(no change)
R5F21345CDFP#U0	R5F21345CDFP#30	Au --> Cu	SnCu --> Pure Sn	No Change	5 -->8 trays
R5F21345CDFP#W4	R5F21345CDFP#50	Au --> Cu	SnCu --> Pure Sn	No Change	tape&reel(no change)
R5F21345CDXXXFP#U0	R5F21345CDXXXFP#30	Au --> Cu	SnCu --> Pure Sn	No Change	5 -->8 trays
R5F21345CDXXXFP#W4	R5F21345CDXXXFP#50	Au --> Cu	SnCu --> Pure Sn	No Change	tape&reel(no change)
R5F21345CNFP#U0	R5F21345CNFP#30	Au --> Cu	SnCu --> Pure Sn	No Change	5 -->8 trays
R5F21345CNFP#W4	R5F21345CNFP#50	Au --> Cu	SnCu --> Pure Sn	No Change	tape&reel(no change)
R5F21345CNXXXFP#U0	R5F21345CNXXXFP#30	Au --> Cu	SnCu --> Pure Sn	No Change	5 -->8 trays
R5F21345CNXXXFP#W4	R5F21345CNXXXFP#50	Au --> Cu	SnCu --> Pure Sn	No Change	tape&reel(no change)
R5F21346CDFP#U0	R5F21346CDFP#30	Au --> Cu	SnCu --> Pure Sn	No Change	5 -->8 trays
R5F21346CDFP#W4	R5F21346CDFP#50	Au --> Cu	SnCu --> Pure Sn	No Change	tape&reel(no change)
R5F21346CDXXXFP#U0	R5F21346CDXXXFP#30	Au --> Cu	SnCu --> Pure Sn	No Change	5 -->8 trays
R5F21346CDXXXFP#W4	R5F21346CDXXXFP#50	Au --> Cu	SnCu --> Pure Sn	No Change	tape&reel(no change)
R5F21346CNFP#U0	R5F21346CNFP#30	Au --> Cu	SnCu --> Pure Sn	No Change	5 -->8 trays
R5F21346CNFP#W4	R5F21346CNFP#50	Au --> Cu	SnCu --> Pure Sn	No Change	tape&reel(no change)
R5F21346CNXXXFP#U0	R5F21346CNXXXFP#30	Au --> Cu	SnCu --> Pure Sn	No Change	5 -->8 trays
R5F21346CNXXXFP#W4	R5F21346CNXXXFP#50	Au --> Cu	SnCu --> Pure Sn	No Change	tape&reel(no change)
R5F21344MDFP#V0	R5F21344MDFP#30	Au --> Cu	Pure Sn (no change)	No Change	8 trays (no change)
R5F21344MDFP#X4	R5F21344MDFP#50	Au --> Cu	Pure Sn (no change)	No Change	tape&reel(no change)
R5F21344MDXXXFP#V0	R5F21344MDXXXFP#30	Au --> Cu	Pure Sn (no change)	No Change	8 trays (no change)
R5F21344MDXXXFP#X4	R5F21344MDXXXFP#50	Au --> Cu	Pure Sn (no change)	No Change	tape&reel(no change)
R5F21344MNFP#V0	R5F21344MNFP#30	Au --> Cu	Pure Sn (no change)	No Change	8 trays (no change)
R5F21344MNFP#X4	R5F21344MNFP#50	Au --> Cu	Pure Sn (no change)	No Change	tape&reel(no change)
R5F21344MNXXXFP#V0	R5F21344MNXXXFP#30	Au --> Cu	Pure Sn (no change)	No Change	8 trays (no change)
R5F21344MNXXXFP#X4	R5F21344MNXXXFP#50	Au --> Cu	Pure Sn (no change)	No Change	tape&reel(no change)
R5F21345MDFP#V0	R5F21345MDFP#30	Au --> Cu	Pure Sn (no change)	No Change	8 trays (no change)
R5F21345MDFP#X4	R5F21345MDFP#50	Au --> Cu	Pure Sn (no change)	No Change	tape&reel(no change)
R5F21345MDXXXFP#V0	R5F21345MDXXXFP#30	Au --> Cu	Pure Sn (no change)	No Change	8 trays (no change)
R5F21345MDXXXFP#X4	R5F21345MDXXXFP#50	Au --> Cu	Pure Sn (no change)	No Change	tape&reel(no change)
R5F21345MNFP#V0	R5F21345MNFP#30	Au --> Cu	Pure Sn (no change)	No Change	8 trays (no change)



Booking P/N (Current)	Booking P/N (change to)	Wire material	Lead Plating	Lead Frame	Packing form
R5F21345MNFP#X4	R5F21345MNFP#50	Au --> Cu	Pure Sn (no change)	No Change	tape&reel(no change)
R5F21345MNXXFP#V0	R5F21345MNXXFP#30	Au --> Cu	Pure Sn (no change)	No Change	8 trays (no change)
R5F21345MNXXFP#X4	R5F21345MNXXFP#50	Au --> Cu	Pure Sn (no change)	No Change	tape&reel(no change)
R5F21346MDFP#V0	R5F21346MDFP#30	Au --> Cu	Pure Sn (no change)	No Change	8 trays (no change)
R5F21346MDFP#X4	R5F21346MDFP#50	Au --> Cu	Pure Sn (no change)	No Change	tape&reel(no change)
R5F21346MDXXFP#V0	R5F21346MDXXFP#30	Au --> Cu	Pure Sn (no change)	No Change	8 trays (no change)
R5F21346MDXXFP#X4	R5F21346MDXXFP#50	Au --> Cu	Pure Sn (no change)	No Change	tape&reel(no change)
R5F21346MNFP#V0	R5F21346MNFP#30	Au --> Cu	Pure Sn (no change)	No Change	8 trays (no change)
R5F21346MNFP#X4	R5F21346MNFP#50	Au --> Cu	Pure Sn (no change)	No Change	tape&reel(no change)
R5F21346MNXXFP#V0	R5F21346MNXXFP#30	Au --> Cu	Pure Sn (no change)	No Change	8 trays (no change)
R5F21346MNXXFP#X4	R5F21346MNXXFP#50	Au --> Cu	Pure Sn (no change)	No Change	tape&reel(no change)
R5F21354CDFP#U0	R5F21354CDFP#30	Au --> Cu	SnCu --> Pure Sn	No Change	8 trays (no change)
R5F21354CDFP#V2	R5F21354CDFP#30	Au --> Cu	Pure Sn (no change)	No Change	8 trays (no change)
R5F21354CDFP#W4	R5F21354CDFP#50	Au --> Cu	SnCu --> Pure Sn	No Change	tape&reel(no change)
R5F21354CDFP#X6	R5F21354CDFP#50	Au --> Cu	Pure Sn (no change)	No Change	tape&reel(no change)
R5F21354CDXXFP#U0	R5F21354CDXXFP#30	Au --> Cu	SnCu --> Pure Sn	No Change	8 trays (no change)
R5F21354CDXXFP#V2	R5F21354CDXXFP#30	Au --> Cu	Pure Sn (no change)	No Change	8 trays (no change)
R5F21354CDXXFP#W4	R5F21354CDXXFP#50	Au --> Cu	SnCu --> Pure Sn	No Change	tape&reel(no change)
R5F21354CDXXFP#X6	R5F21354CDXXFP#50	Au --> Cu	Pure Sn (no change)	No Change	tape&reel(no change)
R5F21354CNFP#U0	R5F21354CNFP#30	Au --> Cu	SnCu --> Pure Sn	No Change	8 trays (no change)
R5F21354CNFP#V2	R5F21354CNFP#30	Au --> Cu	Pure Sn (no change)	No Change	8 trays (no change)
R5F21354CNFP#W4	R5F21354CNFP#50	Au --> Cu	SnCu --> Pure Sn	No Change	tape&reel(no change)
R5F21354CNFP#X6	R5F21354CNFP#50	Au --> Cu	Pure Sn (no change)	No Change	tape&reel(no change)
R5F21354CNXXFP#U0	R5F21354CNXXFP#30	Au --> Cu	SnCu --> Pure Sn	No Change	8 trays (no change)
R5F21354CNXXFP#V2	R5F21354CNXXFP#30	Au --> Cu	Pure Sn (no change)	No Change	8 trays (no change)
R5F21354CNXXFP#W4	R5F21354CNXXFP#50	Au --> Cu	SnCu --> Pure Sn	No Change	tape&reel(no change)
R5F21354CNXXFP#X6	R5F21354CNXXFP#50	Au --> Cu	Pure Sn (no change)	No Change	tape&reel(no change)
R5F21355CDFP#U0	R5F21355CDFP#30	Au --> Cu	SnCu --> Pure Sn	No Change	8 trays (no change)
R5F21355CDFP#V2	R5F21355CDFP#30	Au --> Cu	Pure Sn (no change)	No Change	8 trays (no change)
R5F21355CDFP#W4	R5F21355CDFP#50	Au --> Cu	SnCu --> Pure Sn	No Change	tape&reel(no change)
R5F21355CDFP#X6	R5F21355CDFP#50	Au --> Cu	Pure Sn (no change)	No Change	tape&reel(no change)
R5F21355CDXXFP#U0	R5F21355CDXXFP#30	Au --> Cu	SnCu --> Pure Sn	No Change	8 trays (no change)
R5F21355CDXXFP#V2	R5F21355CDXXFP#30	Au --> Cu	Pure Sn (no change)	No Change	8 trays (no change)
R5F21355CDXXFP#W4	R5F21355CDXXFP#50	Au --> Cu	SnCu --> Pure Sn	No Change	tape&reel(no change)
R5F21355CDXXFP#X6	R5F21355CDXXFP#50	Au --> Cu	Pure Sn (no change)	No Change	tape&reel(no change)
R5F21355CNFP#U0	R5F21355CNFP#30	Au --> Cu	SnCu --> Pure Sn	No Change	8 trays (no change)
R5F21355CNFP#V2	R5F21355CNFP#30	Au --> Cu	Pure Sn (no change)	No Change	8 trays (no change)
R5F21355CNFP#W4	R5F21355CNFP#50	Au --> Cu	SnCu --> Pure Sn	No Change	tape&reel(no change)
R5F21355CNFP#X6	R5F21355CNFP#50	Au --> Cu	Pure Sn (no change)	No Change	tape&reel(no change)
R5F21355CNXXFP#U0	R5F21355CNXXFP#30	Au --> Cu	SnCu --> Pure Sn	No Change	8 trays (no change)
R5F21355CNXXFP#V2	R5F21355CNXXFP#30	Au --> Cu	Pure Sn (no change)	No Change	8 trays (no change)
R5F21355CNXXFP#W4	R5F21355CNXXFP#50	Au --> Cu	SnCu --> Pure Sn	No Change	tape&reel(no change)
R5F21355CNXXFP#X6	R5F21355CNXXFP#50	Au --> Cu	Pure Sn (no change)	No Change	tape&reel(no change)
R5F21356CDFP#U0	R5F21356CDFP#30	Au --> Cu	SnCu --> Pure Sn	No Change	8 trays (no change)
R5F21356CDFP#V2	R5F21356CDFP#30	Au --> Cu	Pure Sn (no change)	No Change	8 trays (no change)
R5F21356CDFP#W4	R5F21356CDFP#50	Au --> Cu	SnCu --> Pure Sn	No Change	tape&reel(no change)
R5F21356CDFP#X6	R5F21356CDFP#50	Au --> Cu	Pure Sn (no change)	No Change	tape&reel(no change)
R5F21356CDXXFP#U0	R5F21356CDXXFP#30	Au --> Cu	SnCu --> Pure Sn	No Change	8 trays (no change)
R5F21356CDXXFP#V2	R5F21356CDXXFP#30	Au --> Cu	Pure Sn (no change)	No Change	8 trays (no change)

Booking P/N (Current)	Booking P/N (change to)	Wire material	Lead Plating	Lead Frame	Packing form
R5F21356CDXXXFP#W4	R5F21356CDXXXFP#50	Au --> Cu	SnCu --> Pure Sn	No Change	tape&reel(no change)
R5F21356CDXXXFP#X6	R5F21356CDXXXFP#50	Au --> Cu	Pure Sn (no change)	No Change	tape&reel(no change)
R5F21356CNFP#U0	R5F21356CNFP#30	Au --> Cu	SnCu --> Pure Sn	No Change	8 trays (no change)
R5F21356CNFP#V2	R5F21356CNFP#30	Au --> Cu	Pure Sn (no change)	No Change	8 trays (no change)
R5F21356CNFP#W4	R5F21356CNFP#50	Au --> Cu	SnCu --> Pure Sn	No Change	tape&reel(no change)
R5F21356CNFP#X6	R5F21356CNFP#50	Au --> Cu	Pure Sn (no change)	No Change	tape&reel(no change)
R5F21356CNXXXFP#U0	R5F21356CNXXXFP#30	Au --> Cu	SnCu --> Pure Sn	No Change	8 trays (no change)
R5F21356CNXXXFP#V2	R5F21356CNXXXFP#30	Au --> Cu	Pure Sn (no change)	No Change	8 trays (no change)
R5F21356CNXXXFP#W4	R5F21356CNXXXFP#50	Au --> Cu	SnCu --> Pure Sn	No Change	tape&reel(no change)
R5F21356CNXXXFP#X6	R5F21356CNXXXFP#50	Au --> Cu	Pure Sn (no change)	No Change	tape&reel(no change)
R5F21357CDFP#V0	R5F21357CDFP#30	Au --> Cu	Pure Sn (no change)	No Change	8 trays (no change)
R5F21357CDFP#X4	R5F21357CDFP#50	Au --> Cu	Pure Sn (no change)	No Change	tape&reel(no change)
R5F21357CDXXXFP#V0	R5F21357CDXXXFP#30	Au --> Cu	Pure Sn (no change)	No Change	8 trays (no change)
R5F21357CDXXXFP#X4	R5F21357CDXXXFP#50	Au --> Cu	Pure Sn (no change)	No Change	tape&reel(no change)
R5F21357CNFP#V0	R5F21357CNFP#30	Au --> Cu	Pure Sn (no change)	No Change	8 trays (no change)
R5F21357CNFP#X4	R5F21357CNFP#50	Au --> Cu	Pure Sn (no change)	No Change	tape&reel(no change)
R5F21357CNXXXFP#V0	R5F21357CNXXXFP#30	Au --> Cu	Pure Sn (no change)	No Change	8 trays (no change)
R5F21357CNXXXFP#X4	R5F21357CNXXXFP#50	Au --> Cu	Pure Sn (no change)	No Change	tape&reel(no change)
R5F21358CDFP#V0	R5F21358CDFP#30	Au --> Cu	Pure Sn (no change)	No Change	8 trays (no change)
R5F21358CDFP#X4	R5F21358CDFP#50	Au --> Cu	Pure Sn (no change)	No Change	tape&reel(no change)
R5F21358CDXXXFP#V0	R5F21358CDXXXFP#30	Au --> Cu	Pure Sn (no change)	No Change	8 trays (no change)
R5F21358CDXXXFP#X4	R5F21358CDXXXFP#50	Au --> Cu	Pure Sn (no change)	No Change	tape&reel(no change)
R5F21358CNFP#V0	R5F21358CNFP#30	Au --> Cu	Pure Sn (no change)	No Change	8 trays (no change)
R5F21358CNFP#X4	R5F21358CNFP#50	Au --> Cu	Pure Sn (no change)	No Change	tape&reel(no change)
R5F21358CNXXXFP#V0	R5F21358CNXXXFP#30	Au --> Cu	Pure Sn (no change)	No Change	8 trays (no change)
R5F21358CNXXXFP#X4	R5F21358CNXXXFP#50	Au --> Cu	Pure Sn (no change)	No Change	tape&reel(no change)
R5F2135ACDFP#V0	R5F2135ACDFP#30	Au --> Cu	Pure Sn (no change)	No Change	8 trays (no change)
R5F2135ACDFP#X4	R5F2135ACDFP#50	Au --> Cu	Pure Sn (no change)	No Change	tape&reel(no change)
R5F2135ACDXXXFP#V0	R5F2135ACDXXXFP#30	Au --> Cu	Pure Sn (no change)	No Change	8 trays (no change)
R5F2135ACDXXXFP#X4	R5F2135ACDXXXFP#50	Au --> Cu	Pure Sn (no change)	No Change	tape&reel(no change)
R5F2135ACNFP#V0	R5F2135ACNFP#30	Au --> Cu	Pure Sn (no change)	No Change	8 trays (no change)
R5F2135ACNFP#X4	R5F2135ACNFP#50	Au --> Cu	Pure Sn (no change)	No Change	tape&reel(no change)
R5F2135ACNXXXFP#V0	R5F2135ACNXXXFP#30	Au --> Cu	Pure Sn (no change)	No Change	8 trays (no change)
R5F2135ACNXXXFP#X4	R5F2135ACNXXXFP#50	Au --> Cu	Pure Sn (no change)	No Change	tape&reel(no change)
R5F2135CCDFP#V0	R5F2135CCDFP#30	Au --> Cu	Pure Sn (no change)	No Change	8 trays (no change)
R5F2135CCDFP#X4	R5F2135CCDFP#50	Au --> Cu	Pure Sn (no change)	No Change	tape&reel(no change)
R5F2135CCDXXXFP#V0	R5F2135CCDXXXFP#30	Au --> Cu	Pure Sn (no change)	No Change	8 trays (no change)
R5F2135CCDXXXFP#X4	R5F2135CCDXXXFP#50	Au --> Cu	Pure Sn (no change)	No Change	tape&reel(no change)
R5F2135CCNFP#V0	R5F2135CCNFP#30	Au --> Cu	Pure Sn (no change)	No Change	8 trays (no change)
R5F2135CCNFP#X4	R5F2135CCNFP#50	Au --> Cu	Pure Sn (no change)	No Change	tape&reel(no change)
R5F2135CCNXXXFP#V0	R5F2135CCNXXXFP#30	Au --> Cu	Pure Sn (no change)	No Change	8 trays (no change)
R5F2135CCNXXXFP#X4	R5F2135CCNXXXFP#50	Au --> Cu	Pure Sn (no change)	No Change	tape&reel(no change)
R5F21354DDFP#V0	R5F21354DDFP#30	Au --> Cu	Pure Sn (no change)	No Change	8 trays (no change)
R5F21354DDFP#X4	R5F21354DDFP#50	Au --> Cu	Pure Sn (no change)	No Change	tape&reel(no change)
R5F21354DDXXXFP#V0	R5F21354DDXXXFP#30	Au --> Cu	Pure Sn (no change)	No Change	8 trays (no change)
R5F21354DDXXXFP#X4	R5F21354DDXXXFP#50	Au --> Cu	Pure Sn (no change)	No Change	tape&reel(no change)
R5F21354DNFP#V0	R5F21354DNFP#30	Au --> Cu	Pure Sn (no change)	No Change	8 trays (no change)
R5F21354DNFP#X4	R5F21354DNFP#50	Au --> Cu	Pure Sn (no change)	No Change	tape&reel(no change)
R5F21354DNXXXFP#V0	R5F21354DNXXXFP#30	Au --> Cu	Pure Sn (no change)	No Change	8 trays (no change)



Booking P/N (Current)	Booking P/N (change to)	Wire material	Lead Plating	Lead Frame	Packing form
R5F21358MDFP#V0	R5F21358MDFP#30	Au --> Cu	Pure Sn (no change)	No Change	8 trays (no change)
R5F21358MDFP#X4	R5F21358MDFP#50	Au --> Cu	Pure Sn (no change)	No Change	tape&reel(no change)
R5F21358MDXXXFP#V0	R5F21358MDXXXFP#30	Au --> Cu	Pure Sn (no change)	No Change	8 trays (no change)
R5F21358MDXXXFP#X4	R5F21358MDXXXFP#50	Au --> Cu	Pure Sn (no change)	No Change	tape&reel(no change)
R5F21358MNF#V0	R5F21358MNF#30	Au --> Cu	Pure Sn (no change)	No Change	8 trays (no change)
R5F21358MNF#X4	R5F21358MNF#50	Au --> Cu	Pure Sn (no change)	No Change	tape&reel(no change)
R5F21358MNXXXFP#V0	R5F21358MNXXXFP#30	Au --> Cu	Pure Sn (no change)	No Change	8 trays (no change)
R5F21358MNXXXFP#X4	R5F21358MNXXXFP#50	Au --> Cu	Pure Sn (no change)	No Change	tape&reel(no change)
R5F2135AMD#V0	R5F2135AMD#30	Au --> Cu	Pure Sn (no change)	No Change	8 trays (no change)
R5F2135AMD#X4	R5F2135AMD#50	Au --> Cu	Pure Sn (no change)	No Change	tape&reel(no change)
R5F2135AMDXXXFP#V0	R5F2135AMDXXXFP#30	Au --> Cu	Pure Sn (no change)	No Change	8 trays (no change)
R5F2135AMDXXXFP#X4	R5F2135AMDXXXFP#50	Au --> Cu	Pure Sn (no change)	No Change	tape&reel(no change)
R5F2135AMNF#V0	R5F2135AMNF#30	Au --> Cu	Pure Sn (no change)	No Change	8 trays (no change)
R5F2135AMNF#X4	R5F2135AMNF#50	Au --> Cu	Pure Sn (no change)	No Change	tape&reel(no change)
R5F2135AMNXXXFP#V0	R5F2135AMNXXXFP#30	Au --> Cu	Pure Sn (no change)	No Change	8 trays (no change)
R5F2135AMNXXXFP#X4	R5F2135AMNXXXFP#50	Au --> Cu	Pure Sn (no change)	No Change	tape&reel(no change)
R5F2135CMD#V0	R5F2135CMD#30	Au --> Cu	Pure Sn (no change)	No Change	8 trays (no change)
R5F2135CMD#X4	R5F2135CMD#50	Au --> Cu	Pure Sn (no change)	No Change	tape&reel(no change)
R5F2135CMDXXXFP#V0	R5F2135CMDXXXFP#30	Au --> Cu	Pure Sn (no change)	No Change	8 trays (no change)
R5F2135CMDXXXFP#X4	R5F2135CMDXXXFP#50	Au --> Cu	Pure Sn (no change)	No Change	tape&reel(no change)
R5F2135CMNF#V0	R5F2135CMNF#30	Au --> Cu	Pure Sn (no change)	No Change	8 trays (no change)
R5F2135CMNF#X4	R5F2135CMNF#50	Au --> Cu	Pure Sn (no change)	No Change	tape&reel(no change)
R5F2135CMNXXXFP#V0	R5F2135CMNXXXFP#30	Au --> Cu	Pure Sn (no change)	No Change	8 trays (no change)
R5F2135CMNXXXFP#X4	R5F2135CMNXXXFP#50	Au --> Cu	Pure Sn (no change)	No Change	tape&reel(no change)
R5F21364CDA#V0	R5F21364CDA#30	Au --> Cu	Pure Sn (no change)	No Change	8 trays (no change)
R5F21364CDA#X4	R5F21364CDA#50	Au --> Cu	Pure Sn (no change)	No Change	tape&reel(no change)
R5F21364CDF#V0	R5F21364CDF#30	Au --> Cu	Pure Sn (no change)	No Change	8 trays (no change)
R5F21364CDF#X4	R5F21364CDF#50	Au --> Cu	Pure Sn (no change)	No Change	tape&reel(no change)
R5F21364CDXXXFA#V0	R5F21364CDXXXFA#30	Au --> Cu	Pure Sn (no change)	No Change	8 trays (no change)
R5F21364CDXXXFA#X4	R5F21364CDXXXFA#50	Au --> Cu	Pure Sn (no change)	No Change	tape&reel(no change)
R5F21364CDXXXFP#V0	R5F21364CDXXXFP#30	Au --> Cu	Pure Sn (no change)	No Change	8 trays (no change)
R5F21364CDXXXFP#X4	R5F21364CDXXXFP#50	Au --> Cu	Pure Sn (no change)	No Change	tape&reel(no change)
R5F21364CNFA#V0	R5F21364CNFA#30	Au --> Cu	Pure Sn (no change)	No Change	8 trays (no change)
R5F21364CNFA#X4	R5F21364CNFA#50	Au --> Cu	Pure Sn (no change)	No Change	tape&reel(no change)
R5F21364CNFP#V0	R5F21364CNFP#30	Au --> Cu	Pure Sn (no change)	No Change	8 trays (no change)
R5F21364CNFP#X4	R5F21364CNFP#50	Au --> Cu	Pure Sn (no change)	No Change	tape&reel(no change)
R5F21364CNXXXFA#V0	R5F21364CNXXXFA#30	Au --> Cu	Pure Sn (no change)	No Change	8 trays (no change)
R5F21364CNXXXFA#X4	R5F21364CNXXXFA#50	Au --> Cu	Pure Sn (no change)	No Change	tape&reel(no change)
R5F21364CNXXXFP#V0	R5F21364CNXXXFP#30	Au --> Cu	Pure Sn (no change)	No Change	8 trays (no change)
R5F21364CNXXXFP#X4	R5F21364CNXXXFP#50	Au --> Cu	Pure Sn (no change)	No Change	tape&reel(no change)
R5F21365CDA#V0	R5F21365CDA#30	Au --> Cu	Pure Sn (no change)	No Change	8 trays (no change)
R5F21365CDA#X4	R5F21365CDA#50	Au --> Cu	Pure Sn (no change)	No Change	tape&reel(no change)
R5F21365CDF#V0	R5F21365CDF#30	Au --> Cu	Pure Sn (no change)	No Change	8 trays (no change)
R5F21365CDF#X4	R5F21365CDF#50	Au --> Cu	Pure Sn (no change)	No Change	tape&reel(no change)
R5F21365CDXXXFA#V0	R5F21365CDXXXFA#30	Au --> Cu	Pure Sn (no change)	No Change	8 trays (no change)
R5F21365CDXXXFA#X4	R5F21365CDXXXFA#50	Au --> Cu	Pure Sn (no change)	No Change	tape&reel(no change)
R5F21365CDXXXFP#V0	R5F21365CDXXXFP#30	Au --> Cu	Pure Sn (no change)	No Change	8 trays (no change)
R5F21365CDXXXFP#X4	R5F21365CDXXXFP#50	Au --> Cu	Pure Sn (no change)	No Change	tape&reel(no change)
R5F21365CNFA#V0	R5F21365CNFA#30	Au --> Cu	Pure Sn (no change)	No Change	8 trays (no change)

Booking P/N (Current)	Booking P/N (change to)	Wire material	Lead Plating	Lead Frame	Packing form
R5F21365CNFA#X4	R5F21365CNFA#50	Au --> Cu	Pure Sn (no change)	No Change	tape&reel(no change)
R5F21365CNFP#V0	R5F21365CNFP#30	Au --> Cu	Pure Sn (no change)	No Change	8 trays (no change)
R5F21365CNFP#X4	R5F21365CNFP#50	Au --> Cu	Pure Sn (no change)	No Change	tape&reel(no change)
R5F21365CNXXXFA#V0	R5F21365CNXXXFA#30	Au --> Cu	Pure Sn (no change)	No Change	8 trays (no change)
R5F21365CNXXXFA#X4	R5F21365CNXXXFA#50	Au --> Cu	Pure Sn (no change)	No Change	tape&reel(no change)
R5F21365CNXXXFP#V0	R5F21365CNXXXFP#30	Au --> Cu	Pure Sn (no change)	No Change	8 trays (no change)
R5F21365CNXXXFP#X4	R5F21365CNXXXFP#50	Au --> Cu	Pure Sn (no change)	No Change	tape&reel(no change)
R5F21366C DFA#V0	R5F21366C DFA#30	Au --> Cu	Pure Sn (no change)	No Change	8 trays (no change)
R5F21366C DFA#X4	R5F21366C DFA#50	Au --> Cu	Pure Sn (no change)	No Change	tape&reel(no change)
R5F21366C DFP#V0	R5F21366C DFP#30	Au --> Cu	Pure Sn (no change)	No Change	8 trays (no change)
R5F21366C DFP#X4	R5F21366C DFP#50	Au --> Cu	Pure Sn (no change)	No Change	tape&reel(no change)
R5F21366C DXXXFA#V0	R5F21366C DXXXFA#30	Au --> Cu	Pure Sn (no change)	No Change	8 trays (no change)
R5F21366C DXXXFA#X4	R5F21366C DXXXFA#50	Au --> Cu	Pure Sn (no change)	No Change	tape&reel(no change)
R5F21366C DXXXFP#V0	R5F21366C DXXXFP#30	Au --> Cu	Pure Sn (no change)	No Change	8 trays (no change)
R5F21366C DXXXFP#X4	R5F21366C DXXXFP#50	Au --> Cu	Pure Sn (no change)	No Change	tape&reel(no change)
R5F21366CNFA#V0	R5F21366CNFA#30	Au --> Cu	Pure Sn (no change)	No Change	8 trays (no change)
R5F21366CNFA#X4	R5F21366CNFA#50	Au --> Cu	Pure Sn (no change)	No Change	tape&reel(no change)
R5F21366CNFP#V0	R5F21366CNFP#30	Au --> Cu	Pure Sn (no change)	No Change	8 trays (no change)
R5F21366CNFP#X4	R5F21366CNFP#50	Au --> Cu	Pure Sn (no change)	No Change	tape&reel(no change)
R5F21366CNXXXFA#V0	R5F21366CNXXXFA#30	Au --> Cu	Pure Sn (no change)	No Change	8 trays (no change)
R5F21366CNXXXFA#X4	R5F21366CNXXXFA#50	Au --> Cu	Pure Sn (no change)	No Change	tape&reel(no change)
R5F21366CNXXXFP#V0	R5F21366CNXXXFP#30	Au --> Cu	Pure Sn (no change)	No Change	8 trays (no change)
R5F21366CNXXXFP#X4	R5F21366CNXXXFP#50	Au --> Cu	Pure Sn (no change)	No Change	tape&reel(no change)
R5F21367C DFA#V0	R5F21367C DFA#30	Au --> Cu	Pure Sn (no change)	No Change	8 trays (no change)
R5F21367C DFA#X4	R5F21367C DFA#50	Au --> Cu	Pure Sn (no change)	No Change	tape&reel(no change)
R5F21367C DFP#V0	R5F21367C DFP#30	Au --> Cu	Pure Sn (no change)	No Change	8 trays (no change)
R5F21367C DFP#X4	R5F21367C DFP#50	Au --> Cu	Pure Sn (no change)	No Change	tape&reel(no change)
R5F21367C DXXXFA#V0	R5F21367C DXXXFA#30	Au --> Cu	Pure Sn (no change)	No Change	8 trays (no change)
R5F21367C DXXXFA#X4	R5F21367C DXXXFA#50	Au --> Cu	Pure Sn (no change)	No Change	tape&reel(no change)
R5F21367C DXXXFP#V0	R5F21367C DXXXFP#30	Au --> Cu	Pure Sn (no change)	No Change	8 trays (no change)
R5F21367C DXXXFP#X4	R5F21367C DXXXFP#50	Au --> Cu	Pure Sn (no change)	No Change	tape&reel(no change)
R5F21367CNFA#V0	R5F21367CNFA#30	Au --> Cu	Pure Sn (no change)	No Change	8 trays (no change)
R5F21367CNFA#X4	R5F21367CNFA#50	Au --> Cu	Pure Sn (no change)	No Change	tape&reel(no change)
R5F21367CNFP#V0	R5F21367CNFP#30	Au --> Cu	Pure Sn (no change)	No Change	8 trays (no change)
R5F21367CNFP#X4	R5F21367CNFP#50	Au --> Cu	Pure Sn (no change)	No Change	tape&reel(no change)
R5F21367CNXXXFA#V0	R5F21367CNXXXFA#30	Au --> Cu	Pure Sn (no change)	No Change	8 trays (no change)
R5F21367CNXXXFA#X4	R5F21367CNXXXFA#50	Au --> Cu	Pure Sn (no change)	No Change	tape&reel(no change)
R5F21367CNXXXFP#V0	R5F21367CNXXXFP#30	Au --> Cu	Pure Sn (no change)	No Change	8 trays (no change)
R5F21367CNXXXFP#X4	R5F21367CNXXXFP#50	Au --> Cu	Pure Sn (no change)	No Change	tape&reel(no change)
R5F21368C DFA#V0	R5F21368C DFA#30	Au --> Cu	Pure Sn (no change)	No Change	8 trays (no change)
R5F21368C DFA#X4	R5F21368C DFA#50	Au --> Cu	Pure Sn (no change)	No Change	tape&reel(no change)
R5F21368C DFP#V0	R5F21368C DFP#30	Au --> Cu	Pure Sn (no change)	No Change	8 trays (no change)
R5F21368C DFP#X4	R5F21368C DFP#50	Au --> Cu	Pure Sn (no change)	No Change	tape&reel(no change)
R5F21368C DXXXFA#V0	R5F21368C DXXXFA#30	Au --> Cu	Pure Sn (no change)	No Change	8 trays (no change)
R5F21368C DXXXFA#X4	R5F21368C DXXXFA#50	Au --> Cu	Pure Sn (no change)	No Change	tape&reel(no change)
R5F21368C DXXXFP#V0	R5F21368C DXXXFP#30	Au --> Cu	Pure Sn (no change)	No Change	8 trays (no change)
R5F21368C DXXXFP#X4	R5F21368C DXXXFP#50	Au --> Cu	Pure Sn (no change)	No Change	tape&reel(no change)
R5F21368CNFA#V0	R5F21368CNFA#30	Au --> Cu	Pure Sn (no change)	No Change	8 trays (no change)
R5F21368CNFA#X4	R5F21368CNFA#50	Au --> Cu	Pure Sn (no change)	No Change	tape&reel(no change)

Booking P/N (Current)	Booking P/N (change to)	Wire material	Lead Plating	Lead Frame	Packing form
R5F21368CNFP#V0	R5F21368CNFP#30	Au --> Cu	Pure Sn (no change)	No Change	8 trays (no change)
R5F21368CNFP#X4	R5F21368CNFP#50	Au --> Cu	Pure Sn (no change)	No Change	tape&reel(no change)
R5F21368CNXXXFA#V0	R5F21368CNXXXFA#30	Au --> Cu	Pure Sn (no change)	No Change	8 trays (no change)
R5F21368CNXXXFA#X4	R5F21368CNXXXFA#50	Au --> Cu	Pure Sn (no change)	No Change	tape&reel(no change)
R5F21368CNXXXFP#V0	R5F21368CNXXXFP#30	Au --> Cu	Pure Sn (no change)	No Change	8 trays (no change)
R5F21368CNXXXFP#X4	R5F21368CNXXXFP#50	Au --> Cu	Pure Sn (no change)	No Change	tape&reel(no change)
R5F2136ACDFA#V0	R5F2136ACDFA#30	Au --> Cu	Pure Sn (no change)	No Change	8 trays (no change)
R5F2136ACDFA#X4	R5F2136ACDFA#50	Au --> Cu	Pure Sn (no change)	No Change	tape&reel(no change)
R5F2136ACDFP#V0	R5F2136ACDFP#30	Au --> Cu	Pure Sn (no change)	No Change	8 trays (no change)
R5F2136ACDFP#X4	R5F2136ACDFP#50	Au --> Cu	Pure Sn (no change)	No Change	tape&reel(no change)
R5F2136ACDXXXFA#V0	R5F2136ACDXXXFA#30	Au --> Cu	Pure Sn (no change)	No Change	8 trays (no change)
R5F2136ACDXXXFA#X4	R5F2136ACDXXXFA#50	Au --> Cu	Pure Sn (no change)	No Change	tape&reel(no change)
R5F2136ACDXXXFP#V0	R5F2136ACDXXXFP#30	Au --> Cu	Pure Sn (no change)	No Change	8 trays (no change)
R5F2136ACDXXXFP#X4	R5F2136ACDXXXFP#50	Au --> Cu	Pure Sn (no change)	No Change	tape&reel(no change)
R5F2136ACNFA#V0	R5F2136ACNFA#30	Au --> Cu	Pure Sn (no change)	No Change	8 trays (no change)
R5F2136ACNFA#X4	R5F2136ACNFA#50	Au --> Cu	Pure Sn (no change)	No Change	tape&reel(no change)
R5F2136ACNFP#V0	R5F2136ACNFP#30	Au --> Cu	Pure Sn (no change)	No Change	8 trays (no change)
R5F2136ACNFP#X4	R5F2136ACNFP#50	Au --> Cu	Pure Sn (no change)	No Change	tape&reel(no change)
R5F2136ACNXXXFA#V0	R5F2136ACNXXXFA#30	Au --> Cu	Pure Sn (no change)	No Change	8 trays (no change)
R5F2136ACNXXXFA#X4	R5F2136ACNXXXFA#50	Au --> Cu	Pure Sn (no change)	No Change	tape&reel(no change)
R5F2136ACNXXXFP#V0	R5F2136ACNXXXFP#30	Au --> Cu	Pure Sn (no change)	No Change	8 trays (no change)
R5F2136ACNXXXFP#X4	R5F2136ACNXXXFP#50	Au --> Cu	Pure Sn (no change)	No Change	tape&reel(no change)
R5F2136CCDFA#V0	R5F2136CCDFA#30	Au --> Cu	Pure Sn (no change)	No Change	8 trays (no change)
R5F2136CCDFA#X4	R5F2136CCDFA#50	Au --> Cu	Pure Sn (no change)	No Change	tape&reel(no change)
R5F2136CCDFP#V0	R5F2136CCDFP#30	Au --> Cu	Pure Sn (no change)	No Change	8 trays (no change)
R5F2136CCDFP#X4	R5F2136CCDFP#50	Au --> Cu	Pure Sn (no change)	No Change	tape&reel(no change)
R5F2136CCDXXXFA#V0	R5F2136CCDXXXFA#30	Au --> Cu	Pure Sn (no change)	No Change	8 trays (no change)
R5F2136CCDXXXFA#X4	R5F2136CCDXXXFA#50	Au --> Cu	Pure Sn (no change)	No Change	tape&reel(no change)
R5F2136CCDXXXFP#V0	R5F2136CCDXXXFP#30	Au --> Cu	Pure Sn (no change)	No Change	8 trays (no change)
R5F2136CCDXXXFP#X4	R5F2136CCDXXXFP#50	Au --> Cu	Pure Sn (no change)	No Change	tape&reel(no change)
R5F2136CCNFA#V0	R5F2136CCNFA#30	Au --> Cu	Pure Sn (no change)	No Change	8 trays (no change)
R5F2136CCNFA#X4	R5F2136CCNFA#50	Au --> Cu	Pure Sn (no change)	No Change	tape&reel(no change)
R5F2136CCNFP#V0	R5F2136CCNFP#30	Au --> Cu	Pure Sn (no change)	No Change	8 trays (no change)
R5F2136CCNFP#X4	R5F2136CCNFP#50	Au --> Cu	Pure Sn (no change)	No Change	tape&reel(no change)
R5F2136CCNXXXFA#V0	R5F2136CCNXXXFA#30	Au --> Cu	Pure Sn (no change)	No Change	8 trays (no change)
R5F2136CCNXXXFA#X4	R5F2136CCNXXXFA#50	Au --> Cu	Pure Sn (no change)	No Change	tape&reel(no change)
R5F2136CCNXXXFP#V0	R5F2136CCNXXXFP#30	Au --> Cu	Pure Sn (no change)	No Change	8 trays (no change)
R5F2136CCNXXXFP#X4	R5F2136CCNXXXFP#50	Au --> Cu	Pure Sn (no change)	No Change	tape&reel(no change)
R5F21364MDFA#V0	R5F21364MDFA#30	Au --> Cu	Pure Sn (no change)	No Change	8 trays (no change)
R5F21364MDFA#X4	R5F21364MDFA#50	Au --> Cu	Pure Sn (no change)	No Change	tape&reel(no change)
R5F21364MDFP#V0	R5F21364MDFP#30	Au --> Cu	Pure Sn (no change)	No Change	8 trays (no change)
R5F21364MDFP#X4	R5F21364MDFP#50	Au --> Cu	Pure Sn (no change)	No Change	tape&reel(no change)
R5F21364MDXXXFA#V0	R5F21364MDXXXFA#30	Au --> Cu	Pure Sn (no change)	No Change	8 trays (no change)
R5F21364MDXXXFA#X4	R5F21364MDXXXFA#50	Au --> Cu	Pure Sn (no change)	No Change	tape&reel(no change)
R5F21364MDXXXFP#V0	R5F21364MDXXXFP#30	Au --> Cu	Pure Sn (no change)	No Change	8 trays (no change)
R5F21364MDXXXFP#X4	R5F21364MDXXXFP#50	Au --> Cu	Pure Sn (no change)	No Change	tape&reel(no change)
R5F21364MNFA#V0	R5F21364MNFA#30	Au --> Cu	Pure Sn (no change)	No Change	8 trays (no change)
R5F21364MNFA#X4	R5F21364MNFA#50	Au --> Cu	Pure Sn (no change)	No Change	tape&reel(no change)
R5F21364MNFP#V0	R5F21364MNFP#30	Au --> Cu	Pure Sn (no change)	No Change	8 trays (no change)







Booking P/N (Current)	Booking P/N (change to)	Wire material	Lead Plating	Lead Frame	Packing form
R5F2136CMNXXXFA#X4	R5F2136CMNXXXFA#50	Au --> Cu	Pure Sn (no change)	No Change	tape&reel(no change)
R5F2136CMNXXXFP#V0	R5F2136CMNXXXFP#30	Au --> Cu	Pure Sn (no change)	No Change	8 trays (no change)
R5F2136CMNXXXFP#X4	R5F2136CMNXXXFP#50	Au --> Cu	Pure Sn (no change)	No Change	tape&reel(no change)
R5F21368SDF#V0	R5F21368SDF#30	Au --> Cu	Pure Sn (no change)	No Change	8 trays (no change)
R5F21368SDF#X4	R5F21368SDF#50	Au --> Cu	Pure Sn (no change)	No Change	tape&reel(no change)
R5F21368SDFP#V0	R5F21368SDFP#30	Au --> Cu	Pure Sn (no change)	No Change	8 trays (no change)
R5F21368SDFP#X4	R5F21368SDFP#50	Au --> Cu	Pure Sn (no change)	No Change	tape&reel(no change)
R5F21368SNFA#V0	R5F21368SNFA#30	Au --> Cu	Pure Sn (no change)	No Change	8 trays (no change)
R5F21368SNFA#X4	R5F21368SNFA#50	Au --> Cu	Pure Sn (no change)	No Change	tape&reel(no change)
R5F21368SNFP#V0	R5F21368SNFP#30	Au --> Cu	Pure Sn (no change)	No Change	8 trays (no change)
R5F21368SNFP#X4	R5F21368SNFP#50	Au --> Cu	Pure Sn (no change)	No Change	tape&reel(no change)
R5F2136ASDF#V0	R5F2136ASDF#30	Au --> Cu	Pure Sn (no change)	No Change	8 trays (no change)
R5F2136ASDF#X4	R5F2136ASDF#50	Au --> Cu	Pure Sn (no change)	No Change	tape&reel(no change)
R5F2136ASDFP#V0	R5F2136ASDFP#30	Au --> Cu	Pure Sn (no change)	No Change	8 trays (no change)
R5F2136ASDFP#X4	R5F2136ASDFP#50	Au --> Cu	Pure Sn (no change)	No Change	tape&reel(no change)
R5F2136ASNFA#V0	R5F2136ASNFA#30	Au --> Cu	Pure Sn (no change)	No Change	8 trays (no change)
R5F2136ASNFA#X4	R5F2136ASNFA#50	Au --> Cu	Pure Sn (no change)	No Change	tape&reel(no change)
R5F2136ASNFP#V0	R5F2136ASNFP#30	Au --> Cu	Pure Sn (no change)	No Change	8 trays (no change)
R5F2136ASNFP#X4	R5F2136ASNFP#50	Au --> Cu	Pure Sn (no change)	No Change	tape&reel(no change)
R5F2136CSDF#V0	R5F2136CSDF#30	Au --> Cu	Pure Sn (no change)	No Change	8 trays (no change)
R5F2136CSDF#X4	R5F2136CSDF#50	Au --> Cu	Pure Sn (no change)	No Change	tape&reel(no change)
R5F2136CSDFP#V0	R5F2136CSDFP#30	Au --> Cu	Pure Sn (no change)	No Change	8 trays (no change)
R5F2136CSDFP#X4	R5F2136CSDFP#50	Au --> Cu	Pure Sn (no change)	No Change	tape&reel(no change)
R5F2136CSNFA#V0	R5F2136CSNFA#30	Au --> Cu	Pure Sn (no change)	No Change	8 trays (no change)
R5F2136CSNFA#X4	R5F2136CSNFA#50	Au --> Cu	Pure Sn (no change)	No Change	tape&reel(no change)
R5F2136CSNFP#V0	R5F2136CSNFP#30	Au --> Cu	Pure Sn (no change)	No Change	8 trays (no change)
R5F2136CSNFP#X4	R5F2136CSNFP#50	Au --> Cu	Pure Sn (no change)	No Change	tape&reel(no change)
R5F21386CDFP#V0	R5F21386CDFP#30	Au --> Cu	Pure Sn (no change)	No Change	8 trays (no change)
R5F21386CDXXXFP#V0	R5F21386CDXXXFP#30	Au --> Cu	Pure Sn (no change)	No Change	8 trays (no change)
R5F21386CNFP#V0	R5F21386CNFP#30	Au --> Cu	Pure Sn (no change)	No Change	8 trays (no change)
R5F21386CNXXXFP#V0	R5F21386CNXXXFP#30	Au --> Cu	Pure Sn (no change)	No Change	8 trays (no change)
R5F21387CDFP#V0	R5F21387CDFP#30	Au --> Cu	Pure Sn (no change)	No Change	8 trays (no change)
R5F21387CDXXXFP#V0	R5F21387CDXXXFP#30	Au --> Cu	Pure Sn (no change)	No Change	8 trays (no change)
R5F21387CNFP#V0	R5F21387CNFP#30	Au --> Cu	Pure Sn (no change)	No Change	8 trays (no change)
R5F21387CNXXXFP#V0	R5F21387CNXXXFP#30	Au --> Cu	Pure Sn (no change)	No Change	8 trays (no change)
R5F21388CDFP#V0	R5F21388CDFP#30	Au --> Cu	Pure Sn (no change)	No Change	8 trays (no change)
R5F21388CDXXXFP#V0	R5F21388CDXXXFP#30	Au --> Cu	Pure Sn (no change)	No Change	8 trays (no change)
R5F21388CNFP#V0	R5F21388CNFP#30	Au --> Cu	Pure Sn (no change)	No Change	8 trays (no change)
R5F21388CNXXXFP#V0	R5F21388CNXXXFP#30	Au --> Cu	Pure Sn (no change)	No Change	8 trays (no change)
R5F2138ACDFP#V0	R5F2138ACDFP#30	Au --> Cu	Pure Sn (no change)	No Change	8 trays (no change)
R5F2138ACDXXXFP#V0	R5F2138ACDXXXFP#30	Au --> Cu	Pure Sn (no change)	No Change	8 trays (no change)
R5F2138ACNFP#V0	R5F2138ACNFP#30	Au --> Cu	Pure Sn (no change)	No Change	8 trays (no change)
R5F2138ACNXXXFP#V0	R5F2138ACNXXXFP#30	Au --> Cu	Pure Sn (no change)	No Change	8 trays (no change)
R5F2138CCDFP#V0	R5F2138CCDFP#30	Au --> Cu	Pure Sn (no change)	No Change	8 trays (no change)
R5F2138CCDXXXFP#V0	R5F2138CCDXXXFP#30	Au --> Cu	Pure Sn (no change)	No Change	8 trays (no change)
R5F2138CCNFP#V0	R5F2138CCNFP#30	Au --> Cu	Pure Sn (no change)	No Change	8 trays (no change)
R5F2138CCNXXXFP#V0	R5F2138CCNXXXFP#30	Au --> Cu	Pure Sn (no change)	No Change	8 trays (no change)
R5F21386MDFP#V0	R5F21386MDFP#30	Au --> Cu	Pure Sn (no change)	No Change	8 trays (no change)
R5F21386MDXXXFP#V0	R5F21386MDXXXFP#30	Au --> Cu	Pure Sn (no change)	No Change	8 trays (no change)

Booking P/N (Current)	Booking P/N (change to)	Wire material	Lead Plating	Lead Frame	Packing form
R5F21386MNF#V0	R5F21386MNF#30	Au --> Cu	Pure Sn (no change)	No Change	8 trays (no change)
R5F21386MNXXFP#V0	R5F21386MNXXFP#30	Au --> Cu	Pure Sn (no change)	No Change	8 trays (no change)
R5F21387MDF#V0	R5F21387MDF#30	Au --> Cu	Pure Sn (no change)	No Change	8 trays (no change)
R5F21387MDXXFP#V0	R5F21387MDXXFP#30	Au --> Cu	Pure Sn (no change)	No Change	8 trays (no change)
R5F21387MNF#V0	R5F21387MNF#30	Au --> Cu	Pure Sn (no change)	No Change	8 trays (no change)
R5F21387MNXXFP#V0	R5F21387MNXXFP#30	Au --> Cu	Pure Sn (no change)	No Change	8 trays (no change)
R5F21388MDF#V0	R5F21388MDF#30	Au --> Cu	Pure Sn (no change)	No Change	8 trays (no change)
R5F21388MDXXFP#V0	R5F21388MDXXFP#30	Au --> Cu	Pure Sn (no change)	No Change	8 trays (no change)
R5F21388MNF#V0	R5F21388MNF#30	Au --> Cu	Pure Sn (no change)	No Change	8 trays (no change)
R5F21388MNXXFP#V0	R5F21388MNXXFP#30	Au --> Cu	Pure Sn (no change)	No Change	8 trays (no change)
R5F21388AMDF#V0	R5F21388AMDF#30	Au --> Cu	Pure Sn (no change)	No Change	8 trays (no change)
R5F21388AMXXFP#V0	R5F21388AMXXFP#30	Au --> Cu	Pure Sn (no change)	No Change	8 trays (no change)
R5F21388AMNF#V0	R5F21388AMNF#30	Au --> Cu	Pure Sn (no change)	No Change	8 trays (no change)
R5F21388AMNXXFP#V0	R5F21388AMNXXFP#30	Au --> Cu	Pure Sn (no change)	No Change	8 trays (no change)
R5F21388CMD#V0	R5F21388CMD#30	Au --> Cu	Pure Sn (no change)	No Change	8 trays (no change)
R5F21388CMDXXFP#V0	R5F21388CMDXXFP#30	Au --> Cu	Pure Sn (no change)	No Change	8 trays (no change)
R5F21388CMNF#V0	R5F21388CMNF#30	Au --> Cu	Pure Sn (no change)	No Change	8 trays (no change)
R5F21388CMNXXFP#V0	R5F21388CMNXXFP#30	Au --> Cu	Pure Sn (no change)	No Change	8 trays (no change)
R5F21388SDF#V0	R5F21388SDF#30	Au --> Cu	Pure Sn (no change)	No Change	8 trays (no change)
R5F21388SNFP#V0	R5F21388SNFP#30	Au --> Cu	Pure Sn (no change)	No Change	8 trays (no change)
R5F21388ASDF#V0	R5F21388ASDF#30	Au --> Cu	Pure Sn (no change)	No Change	8 trays (no change)
R5F21388ASNFP#V0	R5F21388ASNFP#30	Au --> Cu	Pure Sn (no change)	No Change	8 trays (no change)
R5F21388SDF#V0	R5F21388SDF#30	Au --> Cu	Pure Sn (no change)	No Change	8 trays (no change)
R5F21388SNFP#V0	R5F21388SNFP#30	Au --> Cu	Pure Sn (no change)	No Change	8 trays (no change)
R5F2L357CDF#U0	R5F2L357CDF#30	Au --> Cu	SnCu --> Pure Sn	No Change	8 trays (no change)
R5F2L357CDF#V2	R5F2L357CDF#30	Au --> Cu	Pure Sn (no change)	No Change	8 trays (no change)
R5F2L357CDXXFP#U0	R5F2L357CDXXFP#30	Au --> Cu	SnCu --> Pure Sn	No Change	8 trays (no change)
R5F2L357CDXXFP#V2	R5F2L357CDXXFP#30	Au --> Cu	Pure Sn (no change)	No Change	8 trays (no change)
R5F2L357CNFP#U0	R5F2L357CNFP#30	Au --> Cu	SnCu --> Pure Sn	No Change	8 trays (no change)
R5F2L357CNFP#V2	R5F2L357CNFP#30	Au --> Cu	Pure Sn (no change)	No Change	8 trays (no change)
R5F2L357CNFP#W4	R5F2L357CNFP#50	Au --> Cu	SnCu --> Pure Sn	No Change	tape&reel(no change)
R5F2L357CNFP#X6	R5F2L357CNFP#50	Au --> Cu	Pure Sn (no change)	No Change	tape&reel(no change)
R5F2L357CNXXFP#U0	R5F2L357CNXXFP#30	Au --> Cu	SnCu --> Pure Sn	No Change	8 trays (no change)
R5F2L357CNXXFP#V2	R5F2L357CNXXFP#30	Au --> Cu	Pure Sn (no change)	No Change	8 trays (no change)
R5F2L358CDF#U0	R5F2L358CDF#30	Au --> Cu	SnCu --> Pure Sn	No Change	8 trays (no change)
R5F2L358CDF#V2	R5F2L358CDF#30	Au --> Cu	Pure Sn (no change)	No Change	8 trays (no change)
R5F2L358CDXXFP#U0	R5F2L358CDXXFP#30	Au --> Cu	SnCu --> Pure Sn	No Change	8 trays (no change)
R5F2L358CDXXFP#V2	R5F2L358CDXXFP#30	Au --> Cu	Pure Sn (no change)	No Change	8 trays (no change)
R5F2L358CNFP#U0	R5F2L358CNFP#30	Au --> Cu	SnCu --> Pure Sn	No Change	8 trays (no change)
R5F2L358CNFP#V2	R5F2L358CNFP#30	Au --> Cu	Pure Sn (no change)	No Change	8 trays (no change)
R5F2L358CNXXFP#U0	R5F2L358CNXXFP#30	Au --> Cu	SnCu --> Pure Sn	No Change	8 trays (no change)
R5F2L358CNXXFP#V2	R5F2L358CNXXFP#30	Au --> Cu	Pure Sn (no change)	No Change	8 trays (no change)
R5F2L35ACDF#U0	R5F2L35ACDF#30	Au --> Cu	SnCu --> Pure Sn	No Change	8 trays (no change)
R5F2L35ACDF#V2	R5F2L35ACDF#30	Au --> Cu	Pure Sn (no change)	No Change	8 trays (no change)
R5F2L35ACDXXFP#U0	R5F2L35ACDXXFP#30	Au --> Cu	SnCu --> Pure Sn	No Change	8 trays (no change)
R5F2L35ACDXXFP#V2	R5F2L35ACDXXFP#30	Au --> Cu	Pure Sn (no change)	No Change	8 trays (no change)
R5F2L35ACNFP#U0	R5F2L35ACNFP#30	Au --> Cu	SnCu --> Pure Sn	No Change	8 trays (no change)
R5F2L35ACNFP#V2	R5F2L35ACNFP#30	Au --> Cu	Pure Sn (no change)	No Change	8 trays (no change)
R5F2L35ACNXXFP#U0	R5F2L35ACNXXFP#30	Au --> Cu	SnCu --> Pure Sn	No Change	8 trays (no change)

Booking P/N (Current)	Booking P/N (change to)	Wire material	Lead Plating	Lead Frame	Packing form
R5F2L35ACNXXXFP#V2	R5F2L35ACNXXXFP#30	Au --> Cu	Pure Sn (no change)	No Change	8 trays (no change)
R5F2L35CCDFP#U0	R5F2L35CCDFP#30	Au --> Cu	SnCu --> Pure Sn	No Change	8 trays (no change)
R5F2L35CCDFP#V2	R5F2L35CCDFP#30	Au --> Cu	Pure Sn (no change)	No Change	8 trays (no change)
R5F2L35CCDXXXFP#U0	R5F2L35CCDXXXFP#30	Au --> Cu	SnCu --> Pure Sn	No Change	8 trays (no change)
R5F2L35CCDXXXFP#V2	R5F2L35CCDXXXFP#30	Au --> Cu	Pure Sn (no change)	No Change	8 trays (no change)
R5F2L35CCNFP#U0	R5F2L35CCNFP#30	Au --> Cu	SnCu --> Pure Sn	No Change	8 trays (no change)
R5F2L35CCNFP#V2	R5F2L35CCNFP#30	Au --> Cu	Pure Sn (no change)	No Change	8 trays (no change)
R5F2L35CCNXXXFP#U0	R5F2L35CCNXXXFP#30	Au --> Cu	SnCu --> Pure Sn	No Change	8 trays (no change)
R5F2L35CCNXXXFP#V2	R5F2L35CCNXXXFP#30	Au --> Cu	Pure Sn (no change)	No Change	8 trays (no change)
R5F2L357MDFP#V0	R5F2L357MDFP#30	Au --> Cu	Pure Sn (no change)	No Change	8 trays (no change)
R5F2L357MDXXXFP#V0	R5F2L357MDXXXFP#30	Au --> Cu	Pure Sn (no change)	No Change	8 trays (no change)
R5F2L357MNFP#V0	R5F2L357MNFP#30	Au --> Cu	Pure Sn (no change)	No Change	8 trays (no change)
R5F2L357MNXXXFP#V0	R5F2L357MNXXXFP#30	Au --> Cu	Pure Sn (no change)	No Change	8 trays (no change)
R5F2L358MDFP#V0	R5F2L358MDFP#30	Au --> Cu	Pure Sn (no change)	No Change	8 trays (no change)
R5F2L358MDXXXFP#V0	R5F2L358MDXXXFP#30	Au --> Cu	Pure Sn (no change)	No Change	8 trays (no change)
R5F2L358MNFP#V0	R5F2L358MNFP#30	Au --> Cu	Pure Sn (no change)	No Change	8 trays (no change)
R5F2L358MNXXXFP#V0	R5F2L358MNXXXFP#30	Au --> Cu	Pure Sn (no change)	No Change	8 trays (no change)
R5F2L35AMDFP#V0	R5F2L35AMDFP#30	Au --> Cu	Pure Sn (no change)	No Change	8 trays (no change)
R5F2L35AMDXXXFP#V0	R5F2L35AMDXXXFP#30	Au --> Cu	Pure Sn (no change)	No Change	8 trays (no change)
R5F2L35AMNFP#V0	R5F2L35AMNFP#30	Au --> Cu	Pure Sn (no change)	No Change	8 trays (no change)
R5F2L35AMNXXXFP#V0	R5F2L35AMNXXXFP#30	Au --> Cu	Pure Sn (no change)	No Change	8 trays (no change)
R5F2L35CMDP#V0	R5F2L35CMDP#30	Au --> Cu	Pure Sn (no change)	No Change	8 trays (no change)
R5F2L35CMDXXXFP#V0	R5F2L35CMDXXXFP#30	Au --> Cu	Pure Sn (no change)	No Change	8 trays (no change)
R5F2L35CMNFP#V0	R5F2L35CMNFP#30	Au --> Cu	Pure Sn (no change)	No Change	8 trays (no change)
R5F2L35CMNXXXFP#V0	R5F2L35CMNXXXFP#30	Au --> Cu	Pure Sn (no change)	No Change	8 trays (no change)
R5F2L367CDA#U0	R5F2L367CDA#30	Au --> Cu	SnCu --> Pure Sn	No Change	8 trays (no change)
R5F2L367CDA#V2	R5F2L367CDA#30	Au --> Cu	Pure Sn (no change)	No Change	8 trays (no change)
R5F2L367CDFP#U0	R5F2L367CDFP#30	Au --> Cu	SnCu --> Pure Sn	No Change	8 trays (no change)
R5F2L367CDFP#V2	R5F2L367CDFP#30	Au --> Cu	Pure Sn (no change)	No Change	8 trays (no change)
R5F2L367CDXXXFA#U0	R5F2L367CDXXXFA#30	Au --> Cu	SnCu --> Pure Sn	No Change	8 trays (no change)
R5F2L367CDXXXFA#V2	R5F2L367CDXXXFA#30	Au --> Cu	Pure Sn (no change)	No Change	8 trays (no change)
R5F2L367CDXXXFP#U0	R5F2L367CDXXXFP#30	Au --> Cu	SnCu --> Pure Sn	No Change	8 trays (no change)
R5F2L367CDXXXFP#V2	R5F2L367CDXXXFP#30	Au --> Cu	Pure Sn (no change)	No Change	8 trays (no change)
R5F2L367CNFA#U0	R5F2L367CNFA#30	Au --> Cu	SnCu --> Pure Sn	No Change	8 trays (no change)
R5F2L367CNFA#V2	R5F2L367CNFA#30	Au --> Cu	Pure Sn (no change)	No Change	8 trays (no change)
R5F2L367CNFP#U0	R5F2L367CNFP#30	Au --> Cu	SnCu --> Pure Sn	No Change	8 trays (no change)
R5F2L367CNFP#V2	R5F2L367CNFP#30	Au --> Cu	Pure Sn (no change)	No Change	8 trays (no change)
R5F2L367CNXXXFA#U0	R5F2L367CNXXXFA#30	Au --> Cu	SnCu --> Pure Sn	No Change	8 trays (no change)
R5F2L367CNXXXFA#V2	R5F2L367CNXXXFA#30	Au --> Cu	Pure Sn (no change)	No Change	8 trays (no change)
R5F2L367CNXXXFP#U0	R5F2L367CNXXXFP#30	Au --> Cu	SnCu --> Pure Sn	No Change	8 trays (no change)
R5F2L367CNXXXFP#V2	R5F2L367CNXXXFP#30	Au --> Cu	Pure Sn (no change)	No Change	8 trays (no change)
R5F2L368CDA#U0	R5F2L368CDA#30	Au --> Cu	SnCu --> Pure Sn	No Change	8 trays (no change)
R5F2L368CDA#V2	R5F2L368CDA#30	Au --> Cu	Pure Sn (no change)	No Change	8 trays (no change)
R5F2L368CDFP#U0	R5F2L368CDFP#30	Au --> Cu	SnCu --> Pure Sn	No Change	8 trays (no change)
R5F2L368CDFP#V2	R5F2L368CDFP#30	Au --> Cu	Pure Sn (no change)	No Change	8 trays (no change)
R5F2L368CDXXXFA#U0	R5F2L368CDXXXFA#30	Au --> Cu	SnCu --> Pure Sn	No Change	8 trays (no change)
R5F2L368CDXXXFA#V2	R5F2L368CDXXXFA#30	Au --> Cu	Pure Sn (no change)	No Change	8 trays (no change)
R5F2L368CDXXXFP#U0	R5F2L368CDXXXFP#30	Au --> Cu	SnCu --> Pure Sn	No Change	8 trays (no change)
R5F2L368CDXXXFP#V2	R5F2L368CDXXXFP#30	Au --> Cu	Pure Sn (no change)	No Change	8 trays (no change)

Booking P/N (Current)	Booking P/N (change to)	Wire material	Lead Plating	Lead Frame	Packing form
R5F2L368CNFA#U0	R5F2L368CNFA#30	Au --> Cu	SnCu --> Pure Sn	No Change	8 trays (no change)
R5F2L368CNFA#V2	R5F2L368CNFA#30	Au --> Cu	Pure Sn (no change)	No Change	8 trays (no change)
R5F2L368CNFP#U0	R5F2L368CNFP#30	Au --> Cu	SnCu --> Pure Sn	No Change	8 trays (no change)
R5F2L368CNFP#V2	R5F2L368CNFP#30	Au --> Cu	Pure Sn (no change)	No Change	8 trays (no change)
R5F2L368CNXXXFA#U0	R5F2L368CNXXXFA#30	Au --> Cu	SnCu --> Pure Sn	No Change	8 trays (no change)
R5F2L368CNXXXFA#V2	R5F2L368CNXXXFA#30	Au --> Cu	Pure Sn (no change)	No Change	8 trays (no change)
R5F2L368CNXXXFP#U0	R5F2L368CNXXXFP#30	Au --> Cu	SnCu --> Pure Sn	No Change	8 trays (no change)
R5F2L368CNXXXFP#V2	R5F2L368CNXXXFP#30	Au --> Cu	Pure Sn (no change)	No Change	8 trays (no change)
R5F2L36ACDFA#U0	R5F2L36ACDFA#30	Au --> Cu	SnCu --> Pure Sn	No Change	8 trays (no change)
R5F2L36ACDFA#V2	R5F2L36ACDFA#30	Au --> Cu	Pure Sn (no change)	No Change	8 trays (no change)
R5F2L36ACDFP#U0	R5F2L36ACDFP#30	Au --> Cu	SnCu --> Pure Sn	No Change	8 trays (no change)
R5F2L36ACDFP#V2	R5F2L36ACDFP#30	Au --> Cu	Pure Sn (no change)	No Change	8 trays (no change)
R5F2L36ACDXXXFA#U0	R5F2L36ACDXXXFA#30	Au --> Cu	SnCu --> Pure Sn	No Change	8 trays (no change)
R5F2L36ACDXXXFA#V2	R5F2L36ACDXXXFA#30	Au --> Cu	Pure Sn (no change)	No Change	8 trays (no change)
R5F2L36ACDXXXFP#U0	R5F2L36ACDXXXFP#30	Au --> Cu	SnCu --> Pure Sn	No Change	8 trays (no change)
R5F2L36ACDXXXFP#V2	R5F2L36ACDXXXFP#30	Au --> Cu	Pure Sn (no change)	No Change	8 trays (no change)
R5F2L36ACNFA#U0	R5F2L36ACNFA#30	Au --> Cu	SnCu --> Pure Sn	No Change	8 trays (no change)
R5F2L36ACNFA#V2	R5F2L36ACNFA#30	Au --> Cu	Pure Sn (no change)	No Change	8 trays (no change)
R5F2L36ACNFP#U0	R5F2L36ACNFP#30	Au --> Cu	SnCu --> Pure Sn	No Change	8 trays (no change)
R5F2L36ACNFP#V2	R5F2L36ACNFP#30	Au --> Cu	Pure Sn (no change)	No Change	8 trays (no change)
R5F2L36ACNXXXFA#U0	R5F2L36ACNXXXFA#30	Au --> Cu	SnCu --> Pure Sn	No Change	8 trays (no change)
R5F2L36ACNXXXFA#V2	R5F2L36ACNXXXFA#30	Au --> Cu	Pure Sn (no change)	No Change	8 trays (no change)
R5F2L36ACNXXXFP#U0	R5F2L36ACNXXXFP#30	Au --> Cu	SnCu --> Pure Sn	No Change	8 trays (no change)
R5F2L36ACNXXXFP#V2	R5F2L36ACNXXXFP#30	Au --> Cu	Pure Sn (no change)	No Change	8 trays (no change)
R5F2L36CCDFA#U0	R5F2L36CCDFA#30	Au --> Cu	SnCu --> Pure Sn	No Change	8 trays (no change)
R5F2L36CCDFA#V2	R5F2L36CCDFA#30	Au --> Cu	Pure Sn (no change)	No Change	8 trays (no change)
R5F2L36CCDFP#U0	R5F2L36CCDFP#30	Au --> Cu	SnCu --> Pure Sn	No Change	8 trays (no change)
R5F2L36CCDFP#V2	R5F2L36CCDFP#30	Au --> Cu	Pure Sn (no change)	No Change	8 trays (no change)
R5F2L36CCDXXXFA#U0	R5F2L36CCDXXXFA#30	Au --> Cu	SnCu --> Pure Sn	No Change	8 trays (no change)
R5F2L36CCDXXXFA#V2	R5F2L36CCDXXXFA#30	Au --> Cu	Pure Sn (no change)	No Change	8 trays (no change)
R5F2L36CCDXXXFP#U0	R5F2L36CCDXXXFP#30	Au --> Cu	SnCu --> Pure Sn	No Change	8 trays (no change)
R5F2L36CCDXXXFP#V2	R5F2L36CCDXXXFP#30	Au --> Cu	Pure Sn (no change)	No Change	8 trays (no change)
R5F2L36CCNFA#U0	R5F2L36CCNFA#30	Au --> Cu	SnCu --> Pure Sn	No Change	8 trays (no change)
R5F2L36CCNFA#V2	R5F2L36CCNFA#30	Au --> Cu	Pure Sn (no change)	No Change	8 trays (no change)
R5F2L36CCNFP#U0	R5F2L36CCNFP#30	Au --> Cu	SnCu --> Pure Sn	No Change	8 trays (no change)
R5F2L36CCNFP#V2	R5F2L36CCNFP#30	Au --> Cu	Pure Sn (no change)	No Change	8 trays (no change)
R5F2L36CCNXXXFA#U0	R5F2L36CCNXXXFA#30	Au --> Cu	SnCu --> Pure Sn	No Change	8 trays (no change)
R5F2L36CCNXXXFA#V2	R5F2L36CCNXXXFA#30	Au --> Cu	Pure Sn (no change)	No Change	8 trays (no change)
R5F2L36CCNXXXFP#U0	R5F2L36CCNXXXFP#30	Au --> Cu	SnCu --> Pure Sn	No Change	8 trays (no change)
R5F2L36CCNXXXFP#V2	R5F2L36CCNXXXFP#30	Au --> Cu	Pure Sn (no change)	No Change	8 trays (no change)
R5F2L367MDFA#V0	R5F2L367MDFA#30	Au --> Cu	Pure Sn (no change)	No Change	8 trays (no change)
R5F2L367MDFP#V0	R5F2L367MDFP#30	Au --> Cu	Pure Sn (no change)	No Change	8 trays (no change)
R5F2L367MDXXXFA#V0	R5F2L367MDXXXFA#30	Au --> Cu	Pure Sn (no change)	No Change	8 trays (no change)
R5F2L367MDXXXFP#V0	R5F2L367MDXXXFP#30	Au --> Cu	Pure Sn (no change)	No Change	8 trays (no change)
R5F2L367MNF#V0	R5F2L367MNF#30	Au --> Cu	Pure Sn (no change)	No Change	8 trays (no change)
R5F2L367MNF#V0	R5F2L367MNF#30	Au --> Cu	Pure Sn (no change)	No Change	8 trays (no change)
R5F2L367MNXXXFA#V0	R5F2L367MNXXXFA#30	Au --> Cu	Pure Sn (no change)	No Change	8 trays (no change)
R5F2L367MNXXXFP#V0	R5F2L367MNXXXFP#30	Au --> Cu	Pure Sn (no change)	No Change	8 trays (no change)
R5F2L368MDFA#V0	R5F2L368MDFA#30	Au --> Cu	Pure Sn (no change)	No Change	8 trays (no change)

Booking P/N (Current)	Booking P/N (change to)	Wire material	Lead Plating	Lead Frame	Packing form
R5F2L368MDFP#V0	R5F2L368MDFP#30	Au --> Cu	Pure Sn (no change)	No Change	8 trays (no change)
R5F2L368MDXXXFA#V0	R5F2L368MDXXXFA#30	Au --> Cu	Pure Sn (no change)	No Change	8 trays (no change)
R5F2L368MDXXXFP#V0	R5F2L368MDXXXFP#30	Au --> Cu	Pure Sn (no change)	No Change	8 trays (no change)
R5F2L368MNFA#V0	R5F2L368MNFA#30	Au --> Cu	Pure Sn (no change)	No Change	8 trays (no change)
R5F2L368MNFP#V0	R5F2L368MNFP#30	Au --> Cu	Pure Sn (no change)	No Change	8 trays (no change)
R5F2L368MNXXXFA#V0	R5F2L368MNXXXFA#30	Au --> Cu	Pure Sn (no change)	No Change	8 trays (no change)
R5F2L368MNXXXFP#V0	R5F2L368MNXXXFP#30	Au --> Cu	Pure Sn (no change)	No Change	8 trays (no change)
R5F2L36AMDFA#V0	R5F2L36AMDFA#30	Au --> Cu	Pure Sn (no change)	No Change	8 trays (no change)
R5F2L36AMDFP#V0	R5F2L36AMDFP#30	Au --> Cu	Pure Sn (no change)	No Change	8 trays (no change)
R5F2L36AMDXXXFA#V0	R5F2L36AMDXXXFA#30	Au --> Cu	Pure Sn (no change)	No Change	8 trays (no change)
R5F2L36AMDXXXFP#V0	R5F2L36AMDXXXFP#30	Au --> Cu	Pure Sn (no change)	No Change	8 trays (no change)
R5F2L36AMNFA#V0	R5F2L36AMNFA#30	Au --> Cu	Pure Sn (no change)	No Change	8 trays (no change)
R5F2L36AMNFP#V0	R5F2L36AMNFP#30	Au --> Cu	Pure Sn (no change)	No Change	8 trays (no change)
R5F2L36AMNXXXFA#V0	R5F2L36AMNXXXFA#30	Au --> Cu	Pure Sn (no change)	No Change	8 trays (no change)
R5F2L36AMNXXXFP#V0	R5F2L36AMNXXXFP#30	Au --> Cu	Pure Sn (no change)	No Change	8 trays (no change)
R5F2L36CMDFA#V0	R5F2L36CMDFA#30	Au --> Cu	Pure Sn (no change)	No Change	8 trays (no change)
R5F2L36CMDFP#V0	R5F2L36CMDFP#30	Au --> Cu	Pure Sn (no change)	No Change	8 trays (no change)
R5F2L36CMDXXXFA#V0	R5F2L36CMDXXXFA#30	Au --> Cu	Pure Sn (no change)	No Change	8 trays (no change)
R5F2L36CMDXXXFP#V0	R5F2L36CMDXXXFP#30	Au --> Cu	Pure Sn (no change)	No Change	8 trays (no change)
R5F2L36CMNFA#V0	R5F2L36CMNFA#30	Au --> Cu	Pure Sn (no change)	No Change	8 trays (no change)
R5F2L36CMNFP#V0	R5F2L36CMNFP#30	Au --> Cu	Pure Sn (no change)	No Change	8 trays (no change)
R5F2L36CMNXXXFA#V0	R5F2L36CMNXXXFA#30	Au --> Cu	Pure Sn (no change)	No Change	8 trays (no change)
R5F2L36CMNXXXFP#V0	R5F2L36CMNXXXFP#30	Au --> Cu	Pure Sn (no change)	No Change	8 trays (no change)
R5F2L387CDFP#U0	R5F2L387CDFP#30	Au --> Cu	SnCu --> Pure Sn	No Change	8 trays (no change)
R5F2L387CDFP#V2	R5F2L387CDFP#30	Au --> Cu	Pure Sn (no change)	No Change	8 trays (no change)
R5F2L387CDXXXFP#U0	R5F2L387CDXXXFP#30	Au --> Cu	SnCu --> Pure Sn	No Change	8 trays (no change)
R5F2L387CDXXXFP#V2	R5F2L387CDXXXFP#30	Au --> Cu	Pure Sn (no change)	No Change	8 trays (no change)
R5F2L387CNFP#U0	R5F2L387CNFP#30	Au --> Cu	SnCu --> Pure Sn	No Change	8 trays (no change)
R5F2L387CNFP#V2	R5F2L387CNFP#30	Au --> Cu	Pure Sn (no change)	No Change	8 trays (no change)
R5F2L387CNXXXFP#U0	R5F2L387CNXXXFP#30	Au --> Cu	SnCu --> Pure Sn	No Change	8 trays (no change)
R5F2L387CNXXXFP#V2	R5F2L387CNXXXFP#30	Au --> Cu	Pure Sn (no change)	No Change	8 trays (no change)
R5F2L388CDFP#U0	R5F2L388CDFP#30	Au --> Cu	SnCu --> Pure Sn	No Change	8 trays (no change)
R5F2L388CDFP#V2	R5F2L388CDFP#30	Au --> Cu	Pure Sn (no change)	No Change	8 trays (no change)
R5F2L388CDXXXFP#U0	R5F2L388CDXXXFP#30	Au --> Cu	SnCu --> Pure Sn	No Change	8 trays (no change)
R5F2L388CDXXXFP#V2	R5F2L388CDXXXFP#30	Au --> Cu	Pure Sn (no change)	No Change	8 trays (no change)
R5F2L388CNFP#U0	R5F2L388CNFP#30	Au --> Cu	SnCu --> Pure Sn	No Change	8 trays (no change)
R5F2L388CNFP#V2	R5F2L388CNFP#30	Au --> Cu	Pure Sn (no change)	No Change	8 trays (no change)
R5F2L388CNXXXFP#U0	R5F2L388CNXXXFP#30	Au --> Cu	SnCu --> Pure Sn	No Change	8 trays (no change)
R5F2L388CNXXXFP#V2	R5F2L388CNXXXFP#30	Au --> Cu	Pure Sn (no change)	No Change	8 trays (no change)
R5F2L38ACDFP#U0	R5F2L38ACDFP#30	Au --> Cu	SnCu --> Pure Sn	No Change	8 trays (no change)
R5F2L38ACDFP#V2	R5F2L38ACDFP#30	Au --> Cu	Pure Sn (no change)	No Change	8 trays (no change)
R5F2L38ACDXXXFP#U0	R5F2L38ACDXXXFP#30	Au --> Cu	SnCu --> Pure Sn	No Change	8 trays (no change)
R5F2L38ACDXXXFP#V2	R5F2L38ACDXXXFP#30	Au --> Cu	Pure Sn (no change)	No Change	8 trays (no change)
R5F2L38ACNFP#U0	R5F2L38ACNFP#30	Au --> Cu	SnCu --> Pure Sn	No Change	8 trays (no change)
R5F2L38ACNFP#V2	R5F2L38ACNFP#30	Au --> Cu	Pure Sn (no change)	No Change	8 trays (no change)
R5F2L38ACNXXXFP#U0	R5F2L38ACNXXXFP#30	Au --> Cu	SnCu --> Pure Sn	No Change	8 trays (no change)
R5F2L38ACNXXXFP#V2	R5F2L38ACNXXXFP#30	Au --> Cu	Pure Sn (no change)	No Change	8 trays (no change)
R5F2L38CCDFP#U0	R5F2L38CCDFP#30	Au --> Cu	SnCu --> Pure Sn	No Change	8 trays (no change)
R5F2L38CCDFP#V2	R5F2L38CCDFP#30	Au --> Cu	Pure Sn (no change)	No Change	8 trays (no change)

Booking P/N (Current)	Booking P/N (change to)	Wire material	Lead Plating	Lead Frame	Packing form
R5F2L38CCDXXXFP#U0	R5F2L38CCDXXXFP#30	Au --> Cu	SnCu --> Pure Sn	No Change	8 trays (no change)
R5F2L38CCDXXXFP#V2	R5F2L38CCDXXXFP#30	Au --> Cu	Pure Sn (no change)	No Change	8 trays (no change)
R5F2L38CCNFP#U0	R5F2L38CCNFP#30	Au --> Cu	SnCu --> Pure Sn	No Change	8 trays (no change)
R5F2L38CCNFP#V2	R5F2L38CCNFP#30	Au --> Cu	Pure Sn (no change)	No Change	8 trays (no change)
R5F2L38CCNXXXFP#U0	R5F2L38CCNXXXFP#30	Au --> Cu	SnCu --> Pure Sn	No Change	8 trays (no change)
R5F2L38CCNXXXFP#V2	R5F2L38CCNXXXFP#30	Au --> Cu	Pure Sn (no change)	No Change	8 trays (no change)
R5F2L387MDFP#V0	R5F2L387MDFP#30	Au --> Cu	Pure Sn (no change)	No Change	8 trays (no change)
R5F2L387MDXXXFP#V0	R5F2L387MDXXXFP#30	Au --> Cu	Pure Sn (no change)	No Change	8 trays (no change)
R5F2L387MNFP#V0	R5F2L387MNFP#30	Au --> Cu	Pure Sn (no change)	No Change	8 trays (no change)
R5F2L387MNXXXFP#V0	R5F2L387MNXXXFP#30	Au --> Cu	Pure Sn (no change)	No Change	8 trays (no change)
R5F2L388MDFP#V0	R5F2L388MDFP#30	Au --> Cu	Pure Sn (no change)	No Change	8 trays (no change)
R5F2L388MDXXXFP#V0	R5F2L388MDXXXFP#30	Au --> Cu	Pure Sn (no change)	No Change	8 trays (no change)
R5F2L388MNFP#V0	R5F2L388MNFP#30	Au --> Cu	Pure Sn (no change)	No Change	8 trays (no change)
R5F2L388MNXXXFP#V0	R5F2L388MNXXXFP#30	Au --> Cu	Pure Sn (no change)	No Change	8 trays (no change)
R5F2L38AMDFP#V0	R5F2L38AMDFP#30	Au --> Cu	Pure Sn (no change)	No Change	8 trays (no change)
R5F2L38AMDXXXFP#V0	R5F2L38AMDXXXFP#30	Au --> Cu	Pure Sn (no change)	No Change	8 trays (no change)
R5F2L38AMNFP#V0	R5F2L38AMNFP#30	Au --> Cu	Pure Sn (no change)	No Change	8 trays (no change)
R5F2L38AMNXXXFP#V0	R5F2L38AMNXXXFP#30	Au --> Cu	Pure Sn (no change)	No Change	8 trays (no change)
R5F2L38CMDFP#V0	R5F2L38CMDFP#30	Au --> Cu	Pure Sn (no change)	No Change	8 trays (no change)
R5F2L38CMDXXXFP#V0	R5F2L38CMDXXXFP#30	Au --> Cu	Pure Sn (no change)	No Change	8 trays (no change)
R5F2L38CMNFP#V0	R5F2L38CMNFP#30	Au --> Cu	Pure Sn (no change)	No Change	8 trays (no change)
R5F2L38CMNXXXFP#V0	R5F2L38CMNXXXFP#30	Au --> Cu	Pure Sn (no change)	No Change	8 trays (no change)
R5F2L3A7CDFP#V0	R5F2L3A7CDFP#30	Au --> Cu	Pure Sn (no change)	No Change	8 trays (no change)
R5F2L3A7CDXXXFP#V0	R5F2L3A7CDXXXFP#30	Au --> Cu	Pure Sn (no change)	No Change	8 trays (no change)
R5F2L3A7CNFP#V0	R5F2L3A7CNFP#30	Au --> Cu	Pure Sn (no change)	No Change	8 trays (no change)
R5F2L3A7CNXXXFP#V0	R5F2L3A7CNXXXFP#30	Au --> Cu	Pure Sn (no change)	No Change	8 trays (no change)
R5F2L3A8CDFP#V0	R5F2L3A8CDFP#30	Au --> Cu	Pure Sn (no change)	No Change	8 trays (no change)
R5F2L3A8CDXXXFP#V0	R5F2L3A8CDXXXFP#30	Au --> Cu	Pure Sn (no change)	No Change	8 trays (no change)
R5F2L3A8CNFP#V0	R5F2L3A8CNFP#30	Au --> Cu	Pure Sn (no change)	No Change	8 trays (no change)
R5F2L3A8CNXXXFP#V0	R5F2L3A8CNXXXFP#30	Au --> Cu	Pure Sn (no change)	No Change	8 trays (no change)
R5F2L3AACDFP#V0	R5F2L3AACDFP#30	Au --> Cu	Pure Sn (no change)	No Change	8 trays (no change)
R5F2L3AACDXXXFP#V0	R5F2L3AACDXXXFP#30	Au --> Cu	Pure Sn (no change)	No Change	8 trays (no change)
R5F2L3AACNFP#V0	R5F2L3AACNFP#30	Au --> Cu	Pure Sn (no change)	No Change	8 trays (no change)
R5F2L3AACNXXXFP#V0	R5F2L3AACNXXXFP#30	Au --> Cu	Pure Sn (no change)	No Change	8 trays (no change)
R5F2L3ACCDFP#V0	R5F2L3ACCDFP#30	Au --> Cu	Pure Sn (no change)	No Change	8 trays (no change)
R5F2L3ACDXXXFP#V0	R5F2L3ACDXXXFP#30	Au --> Cu	Pure Sn (no change)	No Change	8 trays (no change)
R5F2L3ACCNFP#V0	R5F2L3ACCNFP#30	Au --> Cu	Pure Sn (no change)	No Change	8 trays (no change)
R5F2L3ACCNXXXFP#V0	R5F2L3ACCNXXXFP#30	Au --> Cu	Pure Sn (no change)	No Change	8 trays (no change)
R5F2L3A7MDFP#V0	R5F2L3A7MDFP#30	Au --> Cu	Pure Sn (no change)	No Change	8 trays (no change)
R5F2L3A7MDXXXFP#V0	R5F2L3A7MDXXXFP#30	Au --> Cu	Pure Sn (no change)	No Change	8 trays (no change)
R5F2L3A7MNFP#V0	R5F2L3A7MNFP#30	Au --> Cu	Pure Sn (no change)	No Change	8 trays (no change)
R5F2L3A7MNXXXFP#V0	R5F2L3A7MNXXXFP#30	Au --> Cu	Pure Sn (no change)	No Change	8 trays (no change)
R5F2L3A8MDFP#V0	R5F2L3A8MDFP#30	Au --> Cu	Pure Sn (no change)	No Change	8 trays (no change)
R5F2L3A8MDXXXFP#V0	R5F2L3A8MDXXXFP#30	Au --> Cu	Pure Sn (no change)	No Change	8 trays (no change)
R5F2L3A8MNFP#V0	R5F2L3A8MNFP#30	Au --> Cu	Pure Sn (no change)	No Change	8 trays (no change)
R5F2L3A8MNXXXFP#V0	R5F2L3A8MNXXXFP#30	Au --> Cu	Pure Sn (no change)	No Change	8 trays (no change)
R5F2L3AAMDFP#V0	R5F2L3AAMDFP#30	Au --> Cu	Pure Sn (no change)	No Change	8 trays (no change)
R5F2L3AAMDXXXFP#V0	R5F2L3AAMDXXXFP#30	Au --> Cu	Pure Sn (no change)	No Change	8 trays (no change)
R5F2L3AAMNFP#V0	R5F2L3AAMNFP#30	Au --> Cu	Pure Sn (no change)	No Change	8 trays (no change)

Booking P/N (Current)	Booking P/N (change to)	Wire material	Lead Plating	Lead Frame	Packing form
R5F2L3AAMNXXFP#V0	R5F2L3AAMNXXFP#30	Au --> Cu	Pure Sn (no change)	No Change	8 trays (no change)
R5F2L3ACMDFP#V0	R5F2L3ACMDFP#30	Au --> Cu	Pure Sn (no change)	No Change	8 trays (no change)
R5F2L3ACMDXXFP#V0	R5F2L3ACMDXXFP#30	Au --> Cu	Pure Sn (no change)	No Change	8 trays (no change)
R5F2L3ACMNFP#V0	R5F2L3ACMNFP#30	Au --> Cu	Pure Sn (no change)	No Change	8 trays (no change)
R5F2L3ACMNXXFP#V0	R5F2L3ACMNXXFP#30	Au --> Cu	Pure Sn (no change)	No Change	8 trays (no change)
R5F2LA32ADFP#V0	R5F2LA32ADFP#30	Au --> Cu	Pure Sn (no change)	No Change	8 trays (no change)
R5F2LA32ADXXFP#V0	R5F2LA32ADXXFP#30	Au --> Cu	Pure Sn (no change)	No Change	8 trays (no change)
R5F2LA32ANFP#V0	R5F2LA32ANFP#30	Au --> Cu	Pure Sn (no change)	No Change	8 trays (no change)
R5F2LA32ANXXFP#V0	R5F2LA32ANXXFP#30	Au --> Cu	Pure Sn (no change)	No Change	8 trays (no change)
R5F2LA34ADFP#V0	R5F2LA34ADFP#30	Au --> Cu	Pure Sn (no change)	No Change	8 trays (no change)
R5F2LA34ADXXFP#V0	R5F2LA34ADXXFP#30	Au --> Cu	Pure Sn (no change)	No Change	8 trays (no change)
R5F2LA34ANFP#V0	R5F2LA34ANFP#30	Au --> Cu	Pure Sn (no change)	No Change	8 trays (no change)
R5F2LA34ANXXFP#V0	R5F2LA34ANXXFP#30	Au --> Cu	Pure Sn (no change)	No Change	8 trays (no change)
R5F2LA36ADFP#V0	R5F2LA36ADFP#30	Au --> Cu	Pure Sn (no change)	No Change	8 trays (no change)
R5F2LA36ADXXFP#V0	R5F2LA36ADXXFP#30	Au --> Cu	Pure Sn (no change)	No Change	8 trays (no change)
R5F2LA36ANFP#V0	R5F2LA36ANFP#30	Au --> Cu	Pure Sn (no change)	No Change	8 trays (no change)
R5F2LA36ANXXFP#V0	R5F2LA36ANXXFP#30	Au --> Cu	Pure Sn (no change)	No Change	8 trays (no change)
R5F2LA38ADFP#V0	R5F2LA38ADFP#30	Au --> Cu	Pure Sn (no change)	No Change	8 trays (no change)
R5F2LA38ADXXFP#V0	R5F2LA38ADXXFP#30	Au --> Cu	Pure Sn (no change)	No Change	8 trays (no change)
R5F2LA38ANFP#V0	R5F2LA38ANFP#30	Au --> Cu	Pure Sn (no change)	No Change	8 trays (no change)
R5F2LA38ANXXFP#V0	R5F2LA38ANXXFP#30	Au --> Cu	Pure Sn (no change)	No Change	8 trays (no change)
R5F2LA52ADFP#V0	R5F2LA52ADFP#30	Au --> Cu	Pure Sn (no change)	No Change	8 trays (no change)
R5F2LA52ADXXFP#V0	R5F2LA52ADXXFP#30	Au --> Cu	Pure Sn (no change)	No Change	8 trays (no change)
R5F2LA52ANFP#V0	R5F2LA52ANFP#30	Au --> Cu	Pure Sn (no change)	No Change	8 trays (no change)
R5F2LA52ANXXFP#V0	R5F2LA52ANXXFP#30	Au --> Cu	Pure Sn (no change)	No Change	8 trays (no change)
R5F2LA54ADFP#V0	R5F2LA54ADFP#30	Au --> Cu	Pure Sn (no change)	No Change	8 trays (no change)
R5F2LA54ADXXFP#V0	R5F2LA54ADXXFP#30	Au --> Cu	Pure Sn (no change)	No Change	8 trays (no change)
R5F2LA54ANFP#V0	R5F2LA54ANFP#30	Au --> Cu	Pure Sn (no change)	No Change	8 trays (no change)
R5F2LA54ANXXFP#V0	R5F2LA54ANXXFP#30	Au --> Cu	Pure Sn (no change)	No Change	8 trays (no change)
R5F2LA56ADFP#V0	R5F2LA56ADFP#30	Au --> Cu	Pure Sn (no change)	No Change	8 trays (no change)
R5F2LA56ADXXFP#V0	R5F2LA56ADXXFP#30	Au --> Cu	Pure Sn (no change)	No Change	8 trays (no change)
R5F2LA56ANFP#V0	R5F2LA56ANFP#30	Au --> Cu	Pure Sn (no change)	No Change	8 trays (no change)
R5F2LA56ANXXFP#V0	R5F2LA56ANXXFP#30	Au --> Cu	Pure Sn (no change)	No Change	8 trays (no change)
R5F2LA58ADFP#V0	R5F2LA58ADFP#30	Au --> Cu	Pure Sn (no change)	No Change	8 trays (no change)
R5F2LA58ADXXFP#V0	R5F2LA58ADXXFP#30	Au --> Cu	Pure Sn (no change)	No Change	8 trays (no change)
R5F2LA58ANFP#V0	R5F2LA58ANFP#30	Au --> Cu	Pure Sn (no change)	No Change	8 trays (no change)
R5F2LA58ANXXFP#V0	R5F2LA58ANXXFP#30	Au --> Cu	Pure Sn (no change)	No Change	8 trays (no change)
R5F2LA64ADFA#V0	R5F2LA64ADFA#30	Au --> Cu	Pure Sn (no change)	No Change	8 trays (no change)
R5F2LA64ADFP#V0	R5F2LA64ADFP#30	Au --> Cu	Pure Sn (no change)	No Change	8 trays (no change)
R5F2LA64ADXXFA#V0	R5F2LA64ADXXFA#30	Au --> Cu	Pure Sn (no change)	No Change	8 trays (no change)
R5F2LA64ADXXFP#V0	R5F2LA64ADXXFP#30	Au --> Cu	Pure Sn (no change)	No Change	8 trays (no change)
R5F2LA64ANFA#V0	R5F2LA64ANFA#30	Au --> Cu	Pure Sn (no change)	No Change	8 trays (no change)
R5F2LA64ANFP#V1	R5F2LA64ANFP#31	Au --> Cu	Pure Sn (no change)	No Change	8 trays (no change)
R5F2LA64ANXXFA#V0	R5F2LA64ANXXFA#30	Au --> Cu	Pure Sn (no change)	No Change	8 trays (no change)
R5F2LA64ANXXFP#V1	R5F2LA64ANXXFP#31	Au --> Cu	Pure Sn (no change)	No Change	8 trays (no change)
R5F2LA66ADFA#V0	R5F2LA66ADFA#30	Au --> Cu	Pure Sn (no change)	No Change	8 trays (no change)
R5F2LA66ADFP#V0	R5F2LA66ADFP#30	Au --> Cu	Pure Sn (no change)	No Change	8 trays (no change)
R5F2LA66ADXXFA#V0	R5F2LA66ADXXFA#30	Au --> Cu	Pure Sn (no change)	No Change	8 trays (no change)
R5F2LA66ADXXFP#V0	R5F2LA66ADXXFP#30	Au --> Cu	Pure Sn (no change)	No Change	8 trays (no change)

Booking P/N (Current)	Booking P/N (change to)	Wire material	Lead Plating	Lead Frame	Packing form
R5F2LA66ANFA#V0	R5F2LA66ANFA#30	Au --> Cu	Pure Sn (no change)	No Change	8 trays (no change)
R5F2LA66ANFP#V0	R5F2LA66ANFP#30	Au --> Cu	Pure Sn (no change)	No Change	8 trays (no change)
R5F2LA66ANXXXFA#V0	R5F2LA66ANXXXFA#30	Au --> Cu	Pure Sn (no change)	No Change	8 trays (no change)
R5F2LA66ANXXXFP#V0	R5F2LA66ANXXXFP#30	Au --> Cu	Pure Sn (no change)	No Change	8 trays (no change)
R5F2LA67ADFA#V0	R5F2LA67ADFA#30	Au --> Cu	Pure Sn (no change)	No Change	8 trays (no change)
R5F2LA67ADFP#V0	R5F2LA67ADFP#30	Au --> Cu	Pure Sn (no change)	No Change	8 trays (no change)
R5F2LA67ADXXXFA#V0	R5F2LA67ADXXXFA#30	Au --> Cu	Pure Sn (no change)	No Change	8 trays (no change)
R5F2LA67ADXXXFP#V0	R5F2LA67ADXXXFP#30	Au --> Cu	Pure Sn (no change)	No Change	8 trays (no change)
R5F2LA67ANFA#V0	R5F2LA67ANFA#30	Au --> Cu	Pure Sn (no change)	No Change	8 trays (no change)
R5F2LA67ANFP#V0	R5F2LA67ANFP#30	Au --> Cu	Pure Sn (no change)	No Change	8 trays (no change)
R5F2LA67ANXXXFA#V0	R5F2LA67ANXXXFA#30	Au --> Cu	Pure Sn (no change)	No Change	8 trays (no change)
R5F2LA67ANXXXFP#V0	R5F2LA67ANXXXFP#30	Au --> Cu	Pure Sn (no change)	No Change	8 trays (no change)
R5F2LA68ADFA#V0	R5F2LA68ADFA#30	Au --> Cu	Pure Sn (no change)	No Change	8 trays (no change)
R5F2LA68ADFP#V0	R5F2LA68ADFP#30	Au --> Cu	Pure Sn (no change)	No Change	8 trays (no change)
R5F2LA68ADXXXFA#V0	R5F2LA68ADXXXFA#30	Au --> Cu	Pure Sn (no change)	No Change	8 trays (no change)
R5F2LA68ADXXXFP#V0	R5F2LA68ADXXXFP#30	Au --> Cu	Pure Sn (no change)	No Change	8 trays (no change)
R5F2LA68ANFA#V0	R5F2LA68ANFA#30	Au --> Cu	Pure Sn (no change)	No Change	8 trays (no change)
R5F2LA68ANFP#V0	R5F2LA68ANFP#30	Au --> Cu	Pure Sn (no change)	No Change	8 trays (no change)
R5F2LA68ANXXXFA#V0	R5F2LA68ANXXXFA#30	Au --> Cu	Pure Sn (no change)	No Change	8 trays (no change)
R5F2LA68ANXXXFP#V0	R5F2LA68ANXXXFP#30	Au --> Cu	Pure Sn (no change)	No Change	8 trays (no change)
R5F2LA6AADFA#V0	R5F2LA6AADFA#30	Au --> Cu	Pure Sn (no change)	No Change	8 trays (no change)
R5F2LA6AADFP#V0	R5F2LA6AADFP#30	Au --> Cu	Pure Sn (no change)	No Change	8 trays (no change)
R5F2LA6AADXXXFA#V0	R5F2LA6AADXXXFA#30	Au --> Cu	Pure Sn (no change)	No Change	8 trays (no change)
R5F2LA6AADXXXFP#V0	R5F2LA6AADXXXFP#30	Au --> Cu	Pure Sn (no change)	No Change	8 trays (no change)
R5F2LA6AANFA#V0	R5F2LA6AANFA#30	Au --> Cu	Pure Sn (no change)	No Change	8 trays (no change)
R5F2LA6AANFP#V0	R5F2LA6AANFP#30	Au --> Cu	Pure Sn (no change)	No Change	8 trays (no change)
R5F2LA6AANXXXFA#V0	R5F2LA6AANXXXFA#30	Au --> Cu	Pure Sn (no change)	No Change	8 trays (no change)
R5F2LA6AANXXXFP#V0	R5F2LA6AANXXXFP#30	Au --> Cu	Pure Sn (no change)	No Change	8 trays (no change)
R5F2LA6CADFA#V0	R5F2LA6CADFA#30	Au --> Cu	Pure Sn (no change)	No Change	8 trays (no change)
R5F2LA6CADFP#V0	R5F2LA6CADFP#30	Au --> Cu	Pure Sn (no change)	No Change	8 trays (no change)
R5F2LA6CADXXXFA#V0	R5F2LA6CADXXXFA#30	Au --> Cu	Pure Sn (no change)	No Change	8 trays (no change)
R5F2LA6CADXXXFP#V0	R5F2LA6CADXXXFP#30	Au --> Cu	Pure Sn (no change)	No Change	8 trays (no change)
R5F2LA6CANFA#V0	R5F2LA6CANFA#30	Au --> Cu	Pure Sn (no change)	No Change	8 trays (no change)
R5F2LA6CANFP#V0	R5F2LA6CANFP#30	Au --> Cu	Pure Sn (no change)	No Change	8 trays (no change)
R5F2LA6CANXXXFA#V0	R5F2LA6CANXXXFA#30	Au --> Cu	Pure Sn (no change)	No Change	8 trays (no change)
R5F2LA6CANXXXFP#V0	R5F2LA6CANXXXFP#30	Au --> Cu	Pure Sn (no change)	No Change	8 trays (no change)
R5F2LA84ADFP#V0	R5F2LA84ADFP#30	Au --> Cu	Pure Sn (no change)	No Change	8 trays (no change)
R5F2LA84ADXXXFP#V0	R5F2LA84ADXXXFP#30	Au --> Cu	Pure Sn (no change)	No Change	8 trays (no change)
R5F2LA84ANFP#V0	R5F2LA84ANFP#30	Au --> Cu	Pure Sn (no change)	No Change	8 trays (no change)
R5F2LA84ANXXXFP#V0	R5F2LA84ANXXXFP#30	Au --> Cu	Pure Sn (no change)	No Change	8 trays (no change)
R5F2LA86ADFP#V0	R5F2LA86ADFP#30	Au --> Cu	Pure Sn (no change)	No Change	8 trays (no change)
R5F2LA86ADXXXFP#V0	R5F2LA86ADXXXFP#30	Au --> Cu	Pure Sn (no change)	No Change	8 trays (no change)
R5F2LA86ANFP#V0	R5F2LA86ANFP#30	Au --> Cu	Pure Sn (no change)	No Change	8 trays (no change)
R5F2LA86ANXXXFP#V0	R5F2LA86ANXXXFP#30	Au --> Cu	Pure Sn (no change)	No Change	8 trays (no change)
R5F2LA87ADFP#V0	R5F2LA87ADFP#30	Au --> Cu	Pure Sn (no change)	No Change	8 trays (no change)
R5F2LA87ADXXXFP#V0	R5F2LA87ADXXXFP#30	Au --> Cu	Pure Sn (no change)	No Change	8 trays (no change)
R5F2LA87ANFP#V0	R5F2LA87ANFP#30	Au --> Cu	Pure Sn (no change)	No Change	8 trays (no change)
R5F2LA87ANXXXFP#V0	R5F2LA87ANXXXFP#30	Au --> Cu	Pure Sn (no change)	No Change	8 trays (no change)
R5F2LA88ADFP#V0	R5F2LA88ADFP#30	Au --> Cu	Pure Sn (no change)	No Change	8 trays (no change)



Booking P/N (Current)	Booking P/N (change to)	Wire material	Lead Plating	Lead Frame	Packing form
R5F2LA88ADXXXFP#V0	R5F2LA88ADXXXFP#30	Au --> Cu	Pure Sn (no change)	No Change	8 trays (no change)
R5F2LA88ANFP#V0	R5F2LA88ANFP#30	Au --> Cu	Pure Sn (no change)	No Change	8 trays (no change)
R5F2LA88ANXXXFP#V0	R5F2LA88ANXXXFP#30	Au --> Cu	Pure Sn (no change)	No Change	8 trays (no change)
R5F2LA8AADFP#V0	R5F2LA8AADFP#30	Au --> Cu	Pure Sn (no change)	No Change	8 trays (no change)
R5F2LA8AADXXXFP#V0	R5F2LA8AADXXXFP#30	Au --> Cu	Pure Sn (no change)	No Change	8 trays (no change)
R5F2LA8AANFP#V0	R5F2LA8AANFP#30	Au --> Cu	Pure Sn (no change)	No Change	8 trays (no change)
R5F2LA8AANXXXFP#V0	R5F2LA8AANXXXFP#30	Au --> Cu	Pure Sn (no change)	No Change	8 trays (no change)
R5F2LA8CADFP#V0	R5F2LA8CADFP#30	Au --> Cu	Pure Sn (no change)	No Change	8 trays (no change)
R5F2LA8CADXXXFP#V0	R5F2LA8CADXXXFP#30	Au --> Cu	Pure Sn (no change)	No Change	8 trays (no change)
R5F2LA8CANFP#V0	R5F2LA8CANFP#30	Au --> Cu	Pure Sn (no change)	No Change	8 trays (no change)
R5F2LA8CANXXXFP#V0	R5F2LA8CANXXXFP#30	Au --> Cu	Pure Sn (no change)	No Change	8 trays (no change)
R5F2M131BDFP#V0	R5F2M131BDFP#30	Au --> Cu	Pure Sn (no change)	No Change	8 trays (no change)
R5F2M131BDFP#X4	R5F2M131BDFP#50	Au --> Cu	Pure Sn (no change)	No Change	tape&reel(no change)
R5F2M131BDXXXFP#V0	R5F2M131BDXXXFP#30	Au --> Cu	Pure Sn (no change)	No Change	8 trays (no change)
R5F2M131BDXXXFP#X4	R5F2M131BDXXXFP#50	Au --> Cu	Pure Sn (no change)	No Change	tape&reel(no change)
R5F2M131BNFP#V0	R5F2M131BNFP#30	Au --> Cu	Pure Sn (no change)	No Change	8 trays (no change)
R5F2M131BNFP#X4	R5F2M131BNFP#50	Au --> Cu	Pure Sn (no change)	No Change	tape&reel(no change)
R5F2M131BNXXXFP#V0	R5F2M131BNXXXFP#30	Au --> Cu	Pure Sn (no change)	No Change	8 trays (no change)
R5F2M131BNXXXFP#X4	R5F2M131BNXXXFP#50	Au --> Cu	Pure Sn (no change)	No Change	tape&reel(no change)
R5F2M132BDFP#V0	R5F2M132BDFP#30	Au --> Cu	Pure Sn (no change)	No Change	8 trays (no change)
R5F2M132BDFP#X4	R5F2M132BDFP#50	Au --> Cu	Pure Sn (no change)	No Change	tape&reel(no change)
R5F2M132BDXXXFP#V0	R5F2M132BDXXXFP#30	Au --> Cu	Pure Sn (no change)	No Change	8 trays (no change)
R5F2M132BDXXXFP#X4	R5F2M132BDXXXFP#50	Au --> Cu	Pure Sn (no change)	No Change	tape&reel(no change)
R5F2M132BNFP#V0	R5F2M132BNFP#30	Au --> Cu	Pure Sn (no change)	No Change	8 trays (no change)
R5F2M132BNFP#X4	R5F2M132BNFP#50	Au --> Cu	Pure Sn (no change)	No Change	tape&reel(no change)
R5F2M132BNXXXFP#V0	R5F2M132BNXXXFP#30	Au --> Cu	Pure Sn (no change)	No Change	8 trays (no change)
R5F2M132BNXXXFP#X4	R5F2M132BNXXXFP#50	Au --> Cu	Pure Sn (no change)	No Change	tape&reel(no change)
R5F2M134BDFP#V0	R5F2M134BDFP#30	Au --> Cu	Pure Sn (no change)	No Change	8 trays (no change)
R5F2M134BDFP#X4	R5F2M134BDFP#50	Au --> Cu	Pure Sn (no change)	No Change	tape&reel(no change)
R5F2M134BDXXXFP#V0	R5F2M134BDXXXFP#30	Au --> Cu	Pure Sn (no change)	No Change	8 trays (no change)
R5F2M134BDXXXFP#X4	R5F2M134BDXXXFP#50	Au --> Cu	Pure Sn (no change)	No Change	tape&reel(no change)
R5F2M134BNFP#V0	R5F2M134BNFP#30	Au --> Cu	Pure Sn (no change)	No Change	8 trays (no change)
R5F2M134BNFP#X4	R5F2M134BNFP#50	Au --> Cu	Pure Sn (no change)	No Change	tape&reel(no change)
R5F2M134BNXXXFP#V0	R5F2M134BNXXXFP#30	Au --> Cu	Pure Sn (no change)	No Change	8 trays (no change)
R5F2M134BNXXXFP#X4	R5F2M134BNXXXFP#50	Au --> Cu	Pure Sn (no change)	No Change	tape&reel(no change)